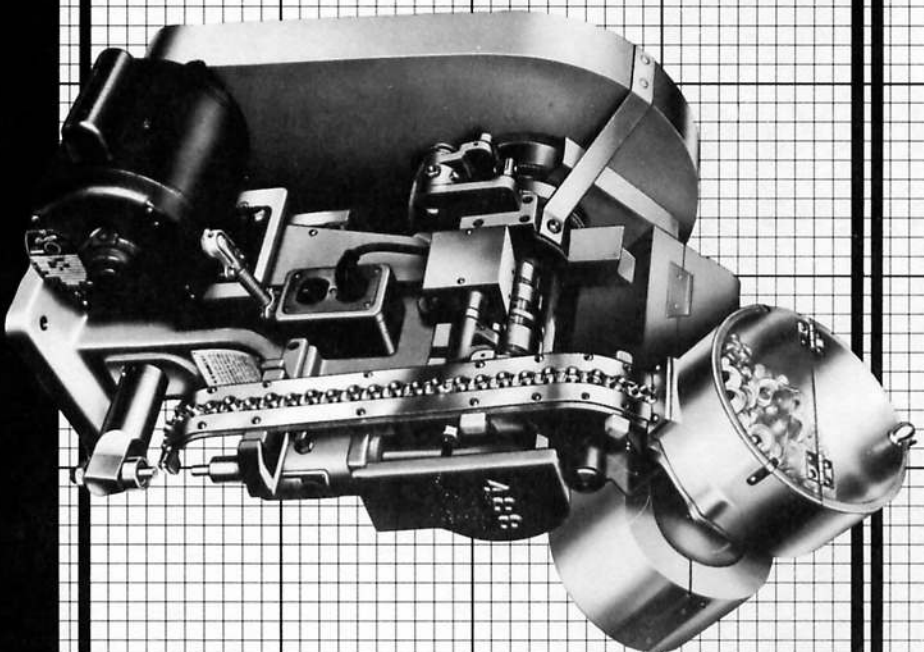


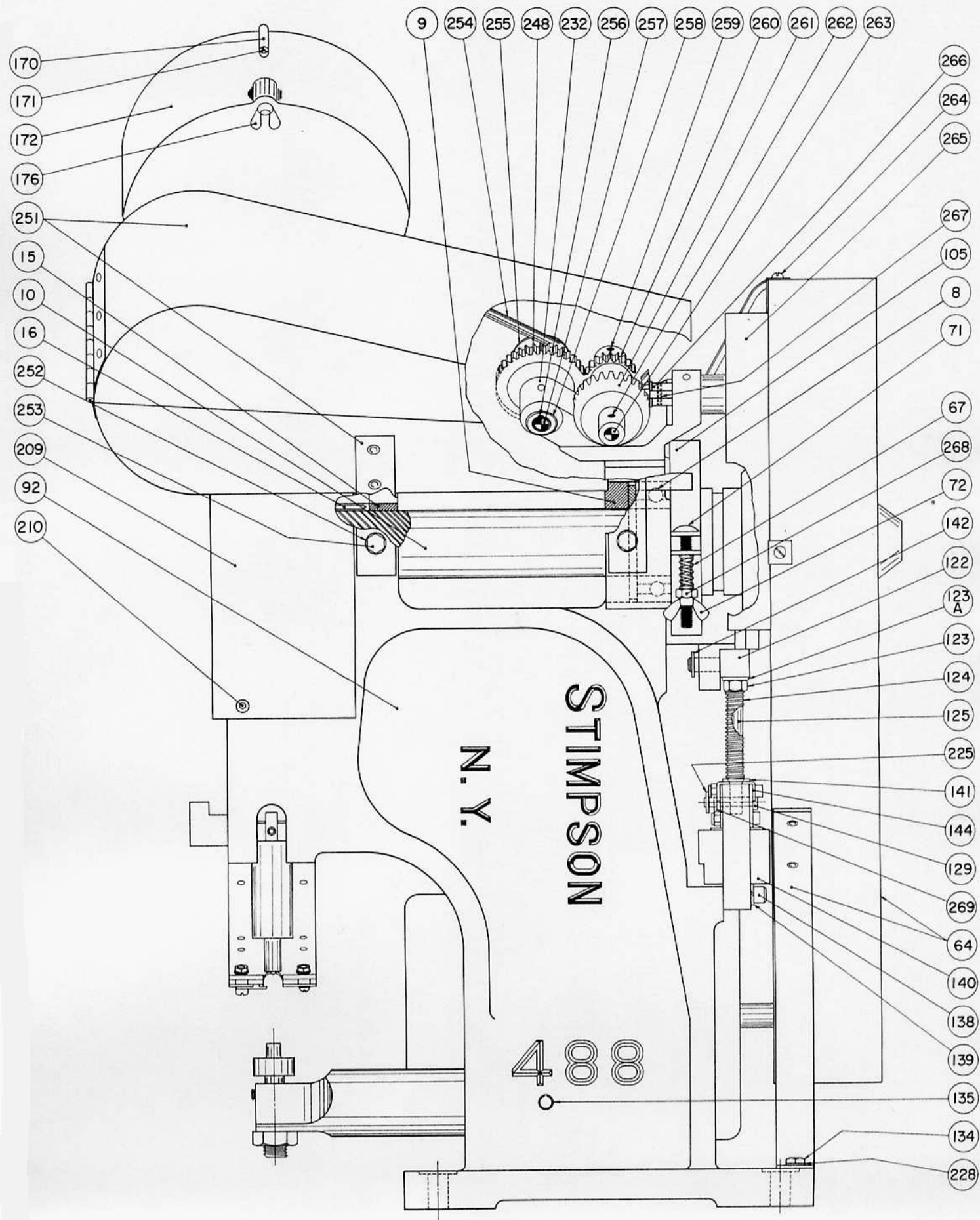


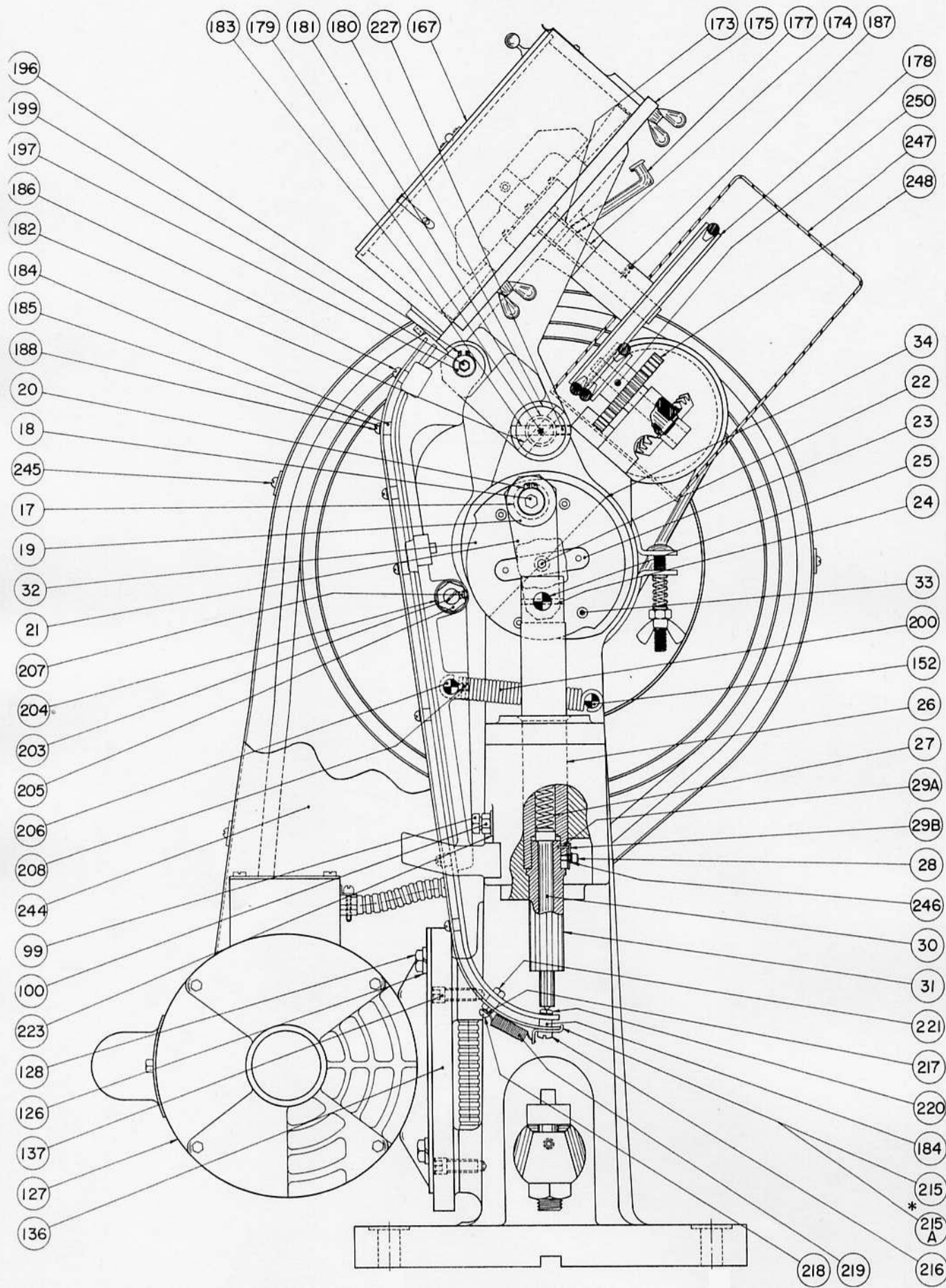
PARTS CATALOG No. 488 — 85

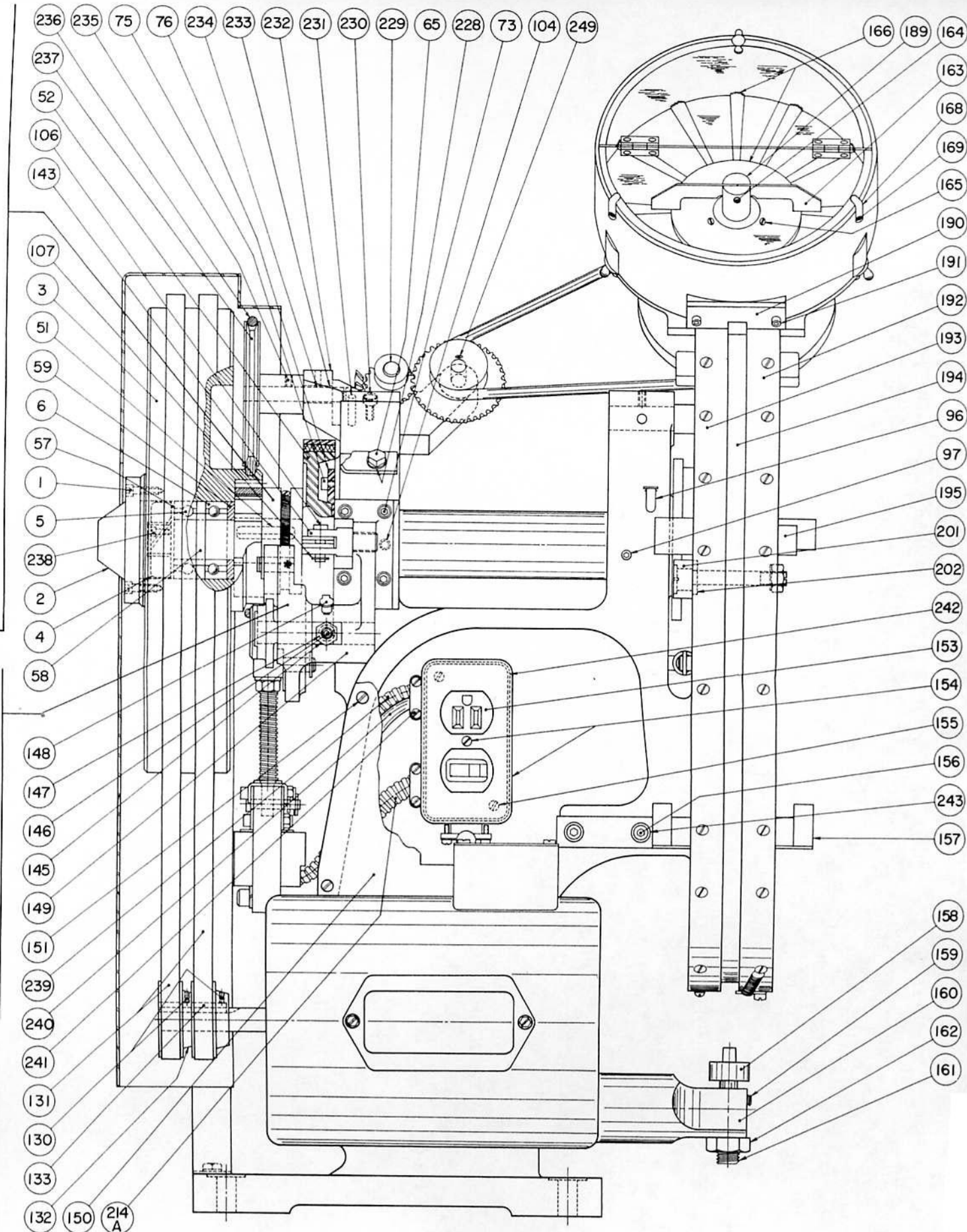


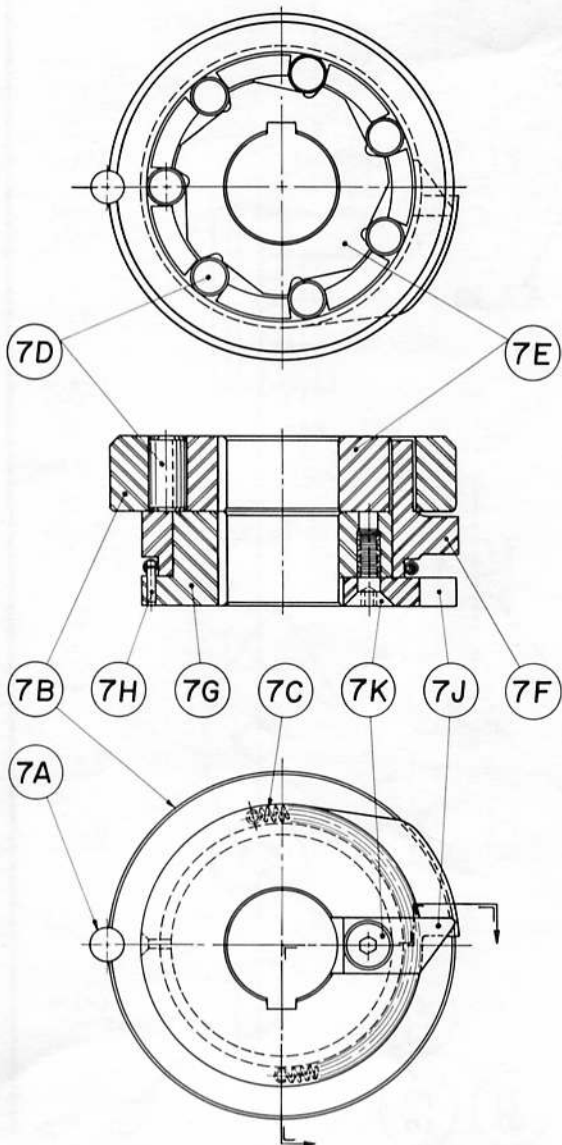
**SINGLE ACTION
DOUBLE ACTION
MACHINE**

4 8 8



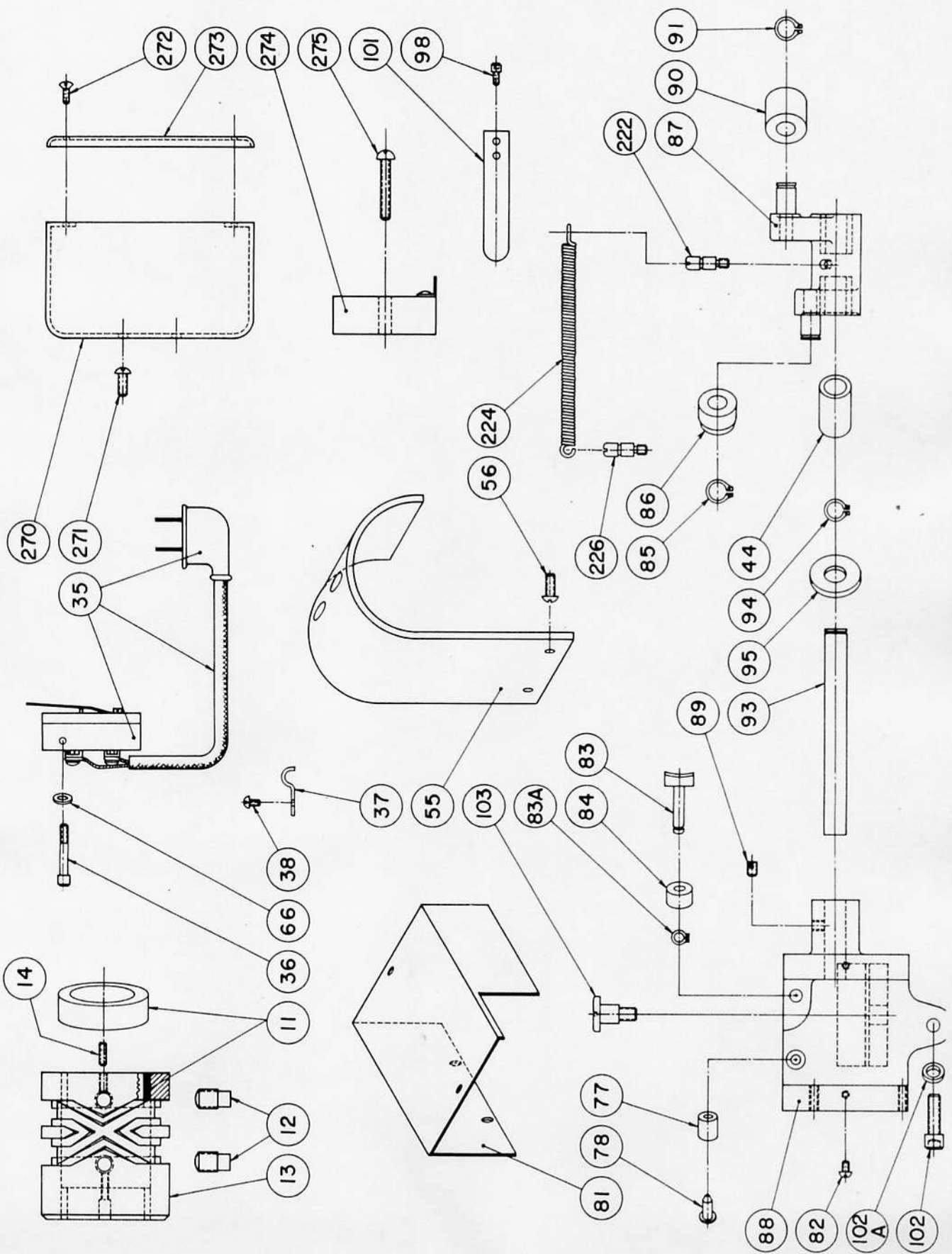




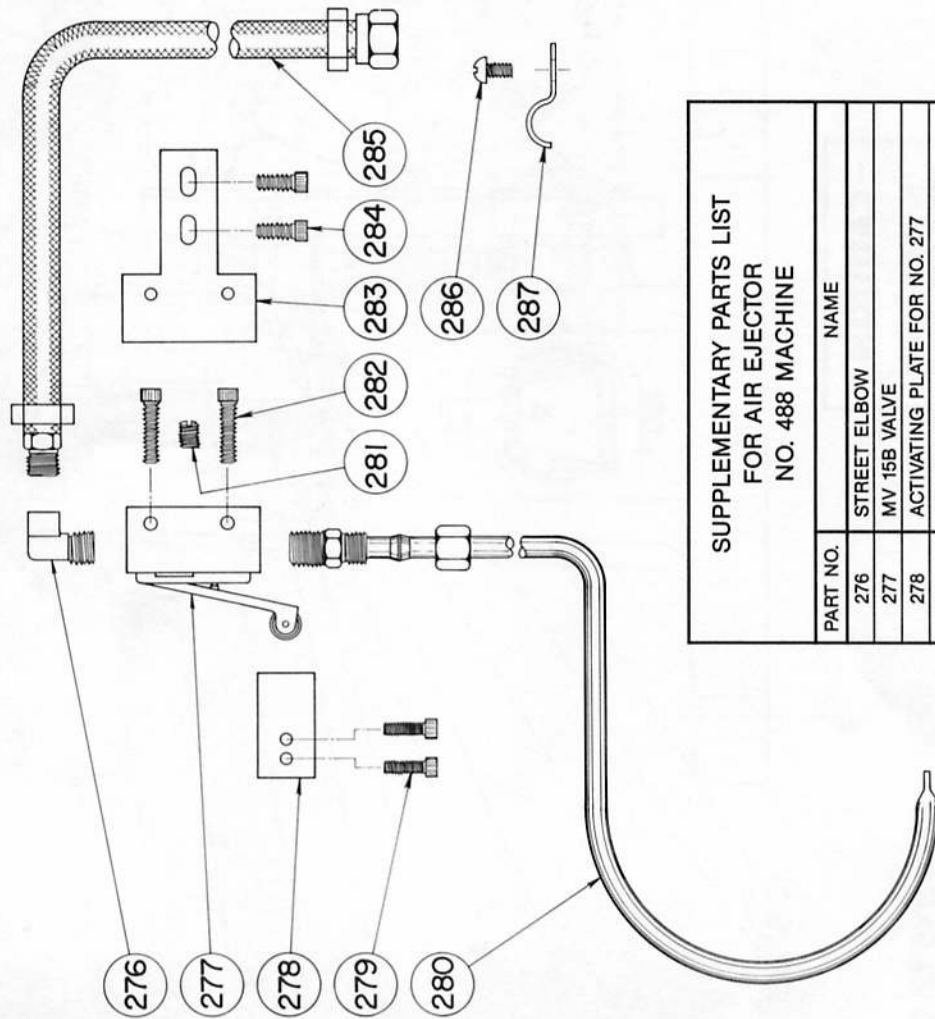


CLUTCH DETAIL

PARTS FOR DUAL STROKE MACHINE



PARTS FOR AIR EJECTOR

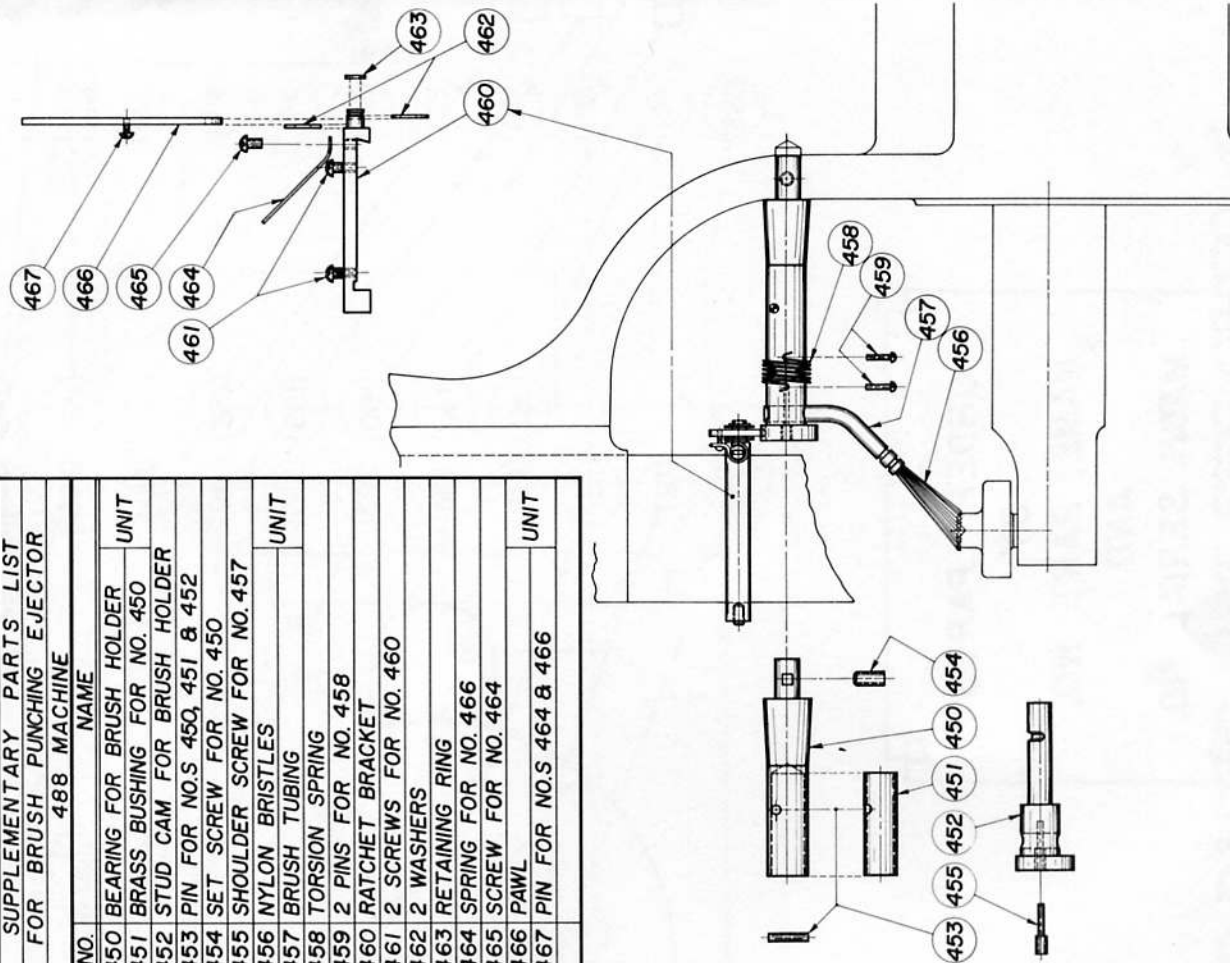


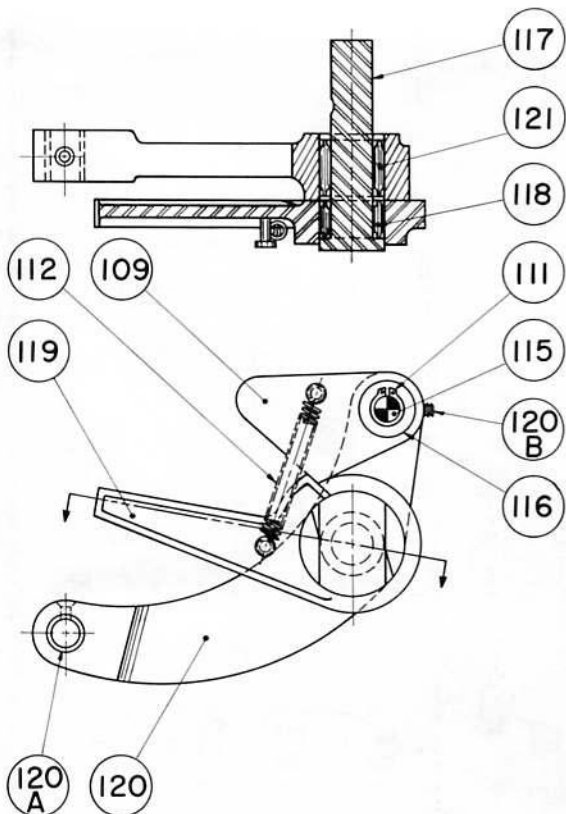
SUPPLEMENTARY PARTS LIST
FOR AIR EJECTOR
NO. 488 MACHINE

PART NO.	NAME
276	STREET ELBOW
277	MV 15B VALVE
278	ACTIVATING PLATE FOR NO. 277
279	2 FASTENING SCREWS FOR NO. 278
280	AIR NOZZEL UNIT
281	PLUG #1111 1/8"
282	2 FASTENING SCREWS FOR NO. 277
283	BRACKET FOR NO. 277
284	2 FASTENING SCREWS FOR NO. 283
285	SUPPLY AIR HOSE
286	FASTENING SCREW FOR NO. 287
287	CLAMP FOR NO. 285

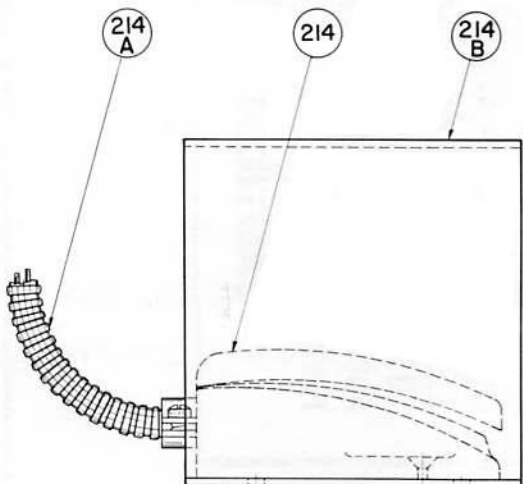
PARTS FOR BRUSH EJECTOR

SUPPLEMENTARY PARTS LIST FOR BRUSH PUNCHING EJECTOR 488 MACHINE		
NO.	NAME	UNIT
450	BEARING FOR BRUSH HOLDER	UNIT
451	BRASS BUSHING FOR NO. 450	
452	STUD CAM FOR BRUSH HOLDER	
453	PIN FOR NO.S 450, 451 & 452	
454	SET SCREW FOR NO. 450	
455	SHOULDER SCREW FOR NO. 457	
456	NYLON BRISTLES	UNIT
457	BRUSH TUBING	
458	TORSION SPRING	
459	2 PINS FOR NO. 458	
460	RATCHET BRACKET	
461	2 SCREWS FOR NO. 460	
462	2 WASHERS	
463	RETAINING RING	
464	SPRING FOR NO. 466	
465	SCREW FOR NO. 464	
466	PAWL	
467	PIN FOR NO.S 464 & 466	UNIT





SAFETY LEVER DETAIL



FOOT SWITCH

488 PARTS LIST

1	3 SCREWS FOR NO. 2
2	FLYWHEEL CAP
3	FLYWHEEL
4	END NUT FOR NO. 10
5	BALL BEARING FOR NO. 3 (1 st)
6	BALLBEARING FOR NO. 3 (2nd)
7A	CLUTCH RACE KEY
7B	CLUTCH RACE
7C	CLUTCH SPRING
7D	7 ROLLS
7E	CAM
7F	ROLL CAGE
7G	CLUTCH FILLING COLLAR
7H	ROLL PIN
7J	BACK STOP PLATE
7K	BACK STOP PLATE SCREW
8	BALL BEARING FOR NO'S 10 & 92
9	RING FOR NO. 8
10	MAIN SHAFT
11	2 BUSHINGS FOR NO. 13
12	2 KEY SCREWS FOR NO. 13
13	DUAL STROKE CAM
14	2 SCREWS FOR NO. 12
15	RING FOR NO. 16
16	NEEDLE BEARING FOR NO'S 10 & 92
17	BUSHING FOR NO. 18
18	POWER DISC STUD
19	WASHER FOR NO. 18
20	RETAINING RING FOR NO. 18
21	PLUNGER LINK
22	SCREW FOR NO. 23
23	KEY FOR NO. 32
24	PIN FOR NO. 25
25	PLUNGER LINK PIN
26	PLUNGER
27	TOP SET-SPINDLE SPRING
28	SCREW FOR NO. 29B
29A	TOP SET LOCK KEY
29B	TOP SET LOCK PLATE
30	TOP SET SPINDLE
31	TOP SET
32	POWER DISC
33	4 SCREWS FOR NO. 34
34	SPLIT CAM
35	MICRO SWITCH ASSEMBLY
36	SCREW FOR NO. 35
37	CABLE CLAMP
38	SCREW FOR NO. 37
44	2 BUSHINGS FOR NO. 87
51	CLUTCH & MAIN SHAFT KEY
52	BRAKE DISC
55	PLASTIC CAM-GUARD
56	2 SCREWS FOR NO. 55
57	WASHER FOR NO. 5

58	SPACER RING FOR NO'S 5 & 6
59	WASHER FOR NO. 6
64	BELT GUARD
65	SCREW FOR NO. 64
66	WASHER FOR NO. 36
67	SPRING FOR NO. 71
71	BRAKE ADJUSTING BOLT
72	WING NUT FOR NO. 71
73	4 SCREWS FOR NO. 149
75	3 SCREWS FOR NO. 76
76	RING BEARING CAP
77	BUSHING FOR NO. 78
78	PUSHER PIN FOR MICRO SWITCH
81	COVER FOR NO. 88
82	2 SCREWS FOR NO. 81
83	GUIDE PIN FOR NO. 13
83A	RETAINING RING FOR NO. 83
84	ROLLER FOR NO. 13
85	RETAINING RING FOR NO'S 86 & 87
86	ROLLER FOR NO. 13
87	HOLD OUT LEVER
88	HOUSING FOR NO. 35
89	SET SCREW FOR NO. 93
90	ROLLER FOR NO. 195
91	RETAINING RING FOR NO'S 87 & 90
92	HEAD
93	SHAFT FOR NO. 87
94	RETAINING RING FOR NO. 93
95	WASHER FOR NO. 93
96	OILER FOR NO. 16
97	SET SCREW FOR NO. 15
98	2 SCREWS FOR NO. 101
99	ROADWAY STOP SCREW
100	NUT FOR NO. 99
101	FLAT SPRING FOR NO. 87
102	SCREW FOR NO. 88
102A	LOCKWASHER FOR NO. 102
103	SHOULDER SCREW FOR NO. 88
104	SET SCREW FOR NO. 9
105	BRAKE BANDS ASSEMBLY
106	PIN FOR NO. 105
107	RETAINING RING FOR NO. 106
109	CLUTCH FINGER LATCH
111	RETAINING RING FOR NO. 115
112	SAFETY LEVER SPRING
115	PIN FOR NO. 109
116	WASHER FOR NO. 115
117	STUD FOR NO. 149
118	BEARING FOR NO. 119
119	CLUTCH FINGER
120	SAFETY LEVER
120A	BUSHING FOR NO. 120
120B	SET SCREW FOR NO'S 115 & 120
121	BEARING FOR NO. 120

488 PARTS LIST

122	SWIVEL FOR NO. 125
123	NUT FOR NO. 125
123A	LOCKWASHER FOR NO. 123
124	SOLENOID SPRING
125	SOLENOID ADJUSTING SCREW
126	4 WASHERS FOR NO. 128
127	MOTOR
128	4 SCREWS FOR MOTOR
129	SOLENOID PIN
130	2 SET SCREWS FOR NO. 132
131	2 MAIN DRIVE "V" BELTS
132	2 MOTOR PULLEYS
133	KEY FOR NO. 132
134	SCREW FOR NO. 64
135	PIN FOR NO. 160
136	MOTOR BRACKET
137	4 SCREWS FOR NO. 136
138	2 SCREWS FOR NO. 140
139	2 LOCKWASHERS FOR NO. 138
140	SOLENOID
141	BRASS WASHER FOR NO. 124
142	RETAINING RING FOR NO. 122
143	BRAKE BAND HOLDER
144	SOLENOID COVER
145	NUT FOR NO. 146
146	SET SCREW FOR NO. 117
147	LOCKWASHER FOR NO. 145
148	OILER FOR NO. 149
149	BRACKET FOR NO's 105, 117, 119 & 120
150	COVER
151	2 SCREWS FOR NO. 150
152	PIN FOR NO. 200 ON HEAD
153	SWITCH-OUTLET
154	COVER SCREW FOR NO. 153
155	2 SCREWS FOR NO. 242
156	2 SCREWS FOR NO. 157
157	ROADWAY GUIDE
158	BOTTOM SET
159	LOCK SCREW FOR NO. 158
160	STEEL ARM
161	BOTTOM SET ADJUSTING SCREW
162	NUT FOR NO. 161
163	2 AGITATORS
164	SCREWS FOR NO. 163
165	3 SCREWS FOR NO'S 166 & 189
166	BOX BRUSH
167	PLASTIC COVER FOR BOX
168	2 CLAMP SPRINGS FOR NO. 167
169	2 SCREWS FOR NO. 168
170	LOCK SPRING FOR NO. 167
171	SCREW FOR NO. 170
172	BOX
173	BUSHING FOR NO. 189 (FIRST)

174	BUSHING FOR NO. 189 (SECOND)
175	CARRIER
176	3 WING SCREWS FOR NO. 172
177	OILER FOR NO. 189
178	CARRIER PULLEY
179	SCREW FOR NO. 181
180	WASHER FOR NO. 175
181	CARRIER STUD
182	PIN FOR NO'S 181 & 175
183	PIN FOR NO'S 181 & 92
184	18 SPACER RINGS
185	16 LOG KWAS HERS
186	6 SCREWS FOR NO. 195
187	SET SCREW FOR NO. 189
188	10 SCREWS FOR NO'S 192, 193 & 194
189	BOX BRUSH SHAFT
190	BOX INSERT
191	2 SCREWS FOR NO. 190
192	RIGHT HAND ROADWAY STRIP
193	LEFT HAND ROADWAY STRIP
194	ROADWAY BACK STRIP
195	ROADWAY
196	2 RETAINING RINGS FOR NO. 197
197	ROADWAY SWING-SHAFT
199	OIL CUP FOR NO. 197
200	ROADWAY SPRING
201	ROLLER FOR NO. 34
202	WASHER FOR NO. 201
203	ECCENTRIC STUD FOR NO. 195
204	LOCKWASHER FOR NO. 205
205	NUT FOR NO. 203
206	PIN FOR NO. 200
207	SET SCREW FOR NO. 203
208	SET SCREW FOR NO. 206
209	GUARD FOR POWER DISC
210	2 SCREWS FOR NO. 209
214	FOOT SWITCH
214A	FLEXIBLE ARMORED CABLE
214B	GUARD
215	LATCH, LEFT
215A	LATCH, RIGHT
216	SHOULDER SCREW
217	LOCK NUT
218	SCREW FOR SPRING
219	LATCH SPRING
220	NUT FOR NO. 216
221	NUT FOR NO. 218
222	STUD FOR NO. 224
223	LOCKWASHER FOR NO. 99
224	SPRING FOR NO. 87
225	RETAINING RING FOR NO. 129
226	STUD FOR NO. 224
227	SET SCREW FOR NO. 181
228	2 WASHERS

488 PARTS LIST

229	BUSHING FOR NO. 260
230	FASTENING SCREW FOR NO. 232
231	PIN FOR NO. 232
232	GEAR DRIVE FOR BRACKET
233	SHORT BUSHING FOR NO. 232
234	SHAFT FOR NO'S 232 & 237
235	SET SCREW FOR NO. 237
236	GEAR DRIVE BELT
237	GEAR DRIVE PULLEY
238	LOCKSCREW FOR NO. 4
239	CABLE FOR NO'S 153 & 140
240	POWER CORD
241	2 CONNECTORS FOR NO'S 239, 240, & 214
242	SWITCH BOX
243	2 LOCKWASHERS FOR NO. 15
244	INBOARD BELT GUARD (LOWER)
245	2 SCREWS FOR NO. 244
246	LOCKWASHER FOR NO. 28
248	LARGE GEAR FOR NO. 178
249	ROLL PIN FOR NO. 255
250	SET SCREW FOR NO. 255
251	GUARD FOR GEAR DRIVE
252	2 WASHERS FOR NO. 253
253	2 FASTENING SCREWS FOR NO. 251

254	BOX DRIVE-BELT FOR NO'S 178 & 255
255	DRIVE PULLEY FOR NO. 254
256	RETAINING RING
257	SHAFT FOR NO'S 248 & 255
258	WASHER
259	SET SCREW FOR NO. 260
260	DRIVE GEAR FOR NO. 248
261	GEAR FOR NO'S 260 & 263
262	ROLL PIN FOR NO'S 261 & 263
263	SHAFT FOR NO'S 260 & 261
264	2 FASTENING SCREWS FOR NO. 265
265	INBOARD BELT-DRIVE GUARD (UPPER)
266	DRIVE GEAR FOR NO. 261
267	ROLL PIN FOR NO. 266
268	ADJUSTING NUT FOR NO. 67
269	PIN FOR NO. 129
270	TIMER BOX
271	SCREW FOR BOX
272	2 SCREWS FOR NO. 273
273	BOX COVER
274	TIMER
275	FASTENING SCREW FOR NO'S 270 & 274