

JOPEVI®

MODEL J-269



SISKA INC.
8 Rosol Lane Ext.
Saddle Brook, NJ
07663

TEL:1-800-393-5381
FAX: 201-794-8147
E-mail:sales@siska.com
www.siska.com

J-269 AUTOMATIC PNEUMATIC MACHINE MODEL J-269 WITH TWO RACEWAYS FOR SETTING METALLIC GROMMETS AND WASHERS, MAXIMUM GROMMET HOLE SIZE 13MM.

THE MACHINE PERFORATES AND SETS THE GROMMET AND WASHER IN JUST ONE HIT BUT WITH TWO INDEPENDENT AXLES.

THIS MACHINE IS MEANT FOR ALL KINDS OF MATERIALS: CANVAS, CURTAINS, OR ANY OTHER MATERIAL.



METAL
GROMMETS + WASHERS



INTRODUCTION

MACHINE MODEL J-269 AUTOMATIC PNEUMATIC WITH TWO DEPOSITS TO PLACE METALLIC GROMMET AND WASHER.

The object of this machine is to place grommet and washer in canvas, curtains, or any other material that requires this kind of reinforcement, it can be used to place the grommet and washer, only the grommet or to simply perforate the material.

WARNINGS.-

- Lack of familiarity with the machine usually leads the operator to elemental doubts about its operation.
- Read this operation manual carefully to securely operate and optimize the machine's capability.
- We urge you to follow this advice, and appreciate your trust at the moment of buying the machine.

**JOPEVI, S.L. ASSUMES NO RESPONSIBILITY ABOUT THE INCORRECT USE
OF THIS MANUAL OR INCORRECT INTERPRETATION OF THE INSTRUCTIONS PROVIDED.**

MACHINE IDENTIFICATION AND PLATES.-

This machine includes an aluminum plate attached with four rivets indicating the following:

Factory Name
Manufacturing Year
Model and Manufacturing number
Power in kw
Air pressure (on pneumatic machines)
CE Mark
Weight in Kilograms

JOPEVI[®] , S.L.		
Elche Parque Industrial C/ Nicolas De Bussi, 32		
Tel.: 34-96 66510 08 - Fax: 34-96 665 10 03		
Modelo	<input type="text"/>	Nº <input type="text"/> CE
Pot.Kw.	<input type="text"/>	Pres.Max.Bars. <input type="text"/>
Año Fab.	<input type="text"/>	Peso <input type="text"/> Kg.

Version 08-02-2014

PAGE

CHAPTER I

CHARACTERISTICS

1.1. DESCRIPTION OF THE MACHINE AND ITS OPERATION.

AUTOMATIC PNEUMATIC MACHINE MODEL J-269 WITH TWO HOPPER BOXES FOR PLACING METALLIC GROMMETS AND WASHERS.

(See figure 1)

The machine consists of a metallic stand with a wood base on which the machine is mounted.

1) The pedal and the pneumatic filter are located in the stand.

2) The head of the machine is comprised of a machine housing, two hopper boxes and the connection panel. The moving parts in the machine are located inside the housing, such as: axles, pneumatic cylinders, etc. The grommets and the washers use the two raceways to descend.

The grommets are placed in the right hopper box "D" and will descend along raceway "E". The grommets are held back by the finger-shaped part n° 268 which is located at the end of the raceway. The washers are placed in the left hopper box "H" and they will descend along raceway "I".

The machine is controlled by a pneumatic system "A". When you press the pedal "B" the pneumatic system operates the pneumatic cylinders of the machine "C" that will cause the vertical axles to come down. The top set spindle n° 218 and the top die n° 217 are attached to the lower part of the vertical axles. The downward motion of the axles is meant for the top set spindle n° 218 to pick up the grommet held back in the lower part of the raceway "E" and pushes it into bottom die n° 219 "G".

At the same time, the part for placing the washer n° 532 pushes the washer located on the lower guides and places it on top of the bottom die n° 219 "G".

The pressure of the top die n° 217 by impacting on the bottom die n° 219, causes the grommet to become attached to the washer.

After this cycle the machine moves back to its starting position ready for a new application as soon as you press the pedal "B".

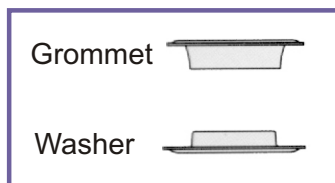
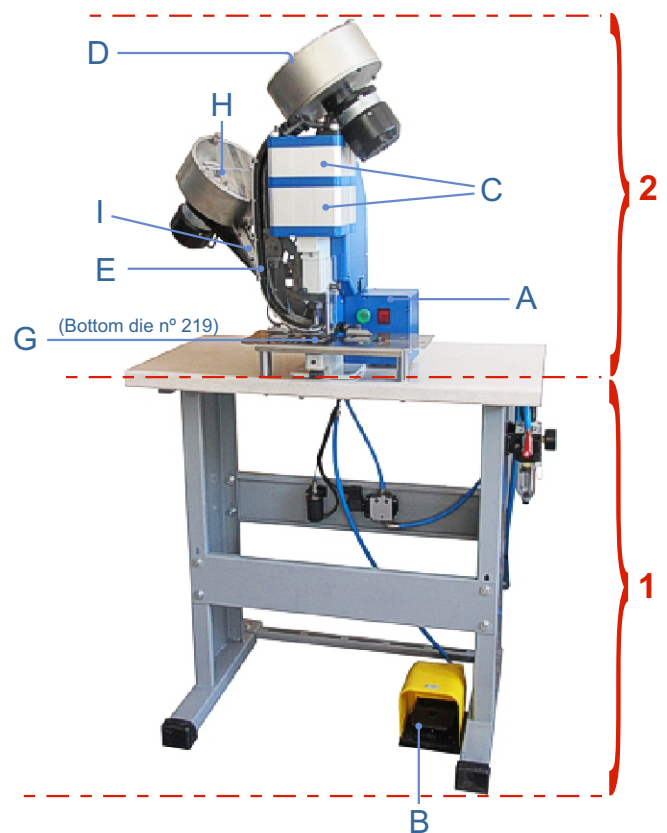
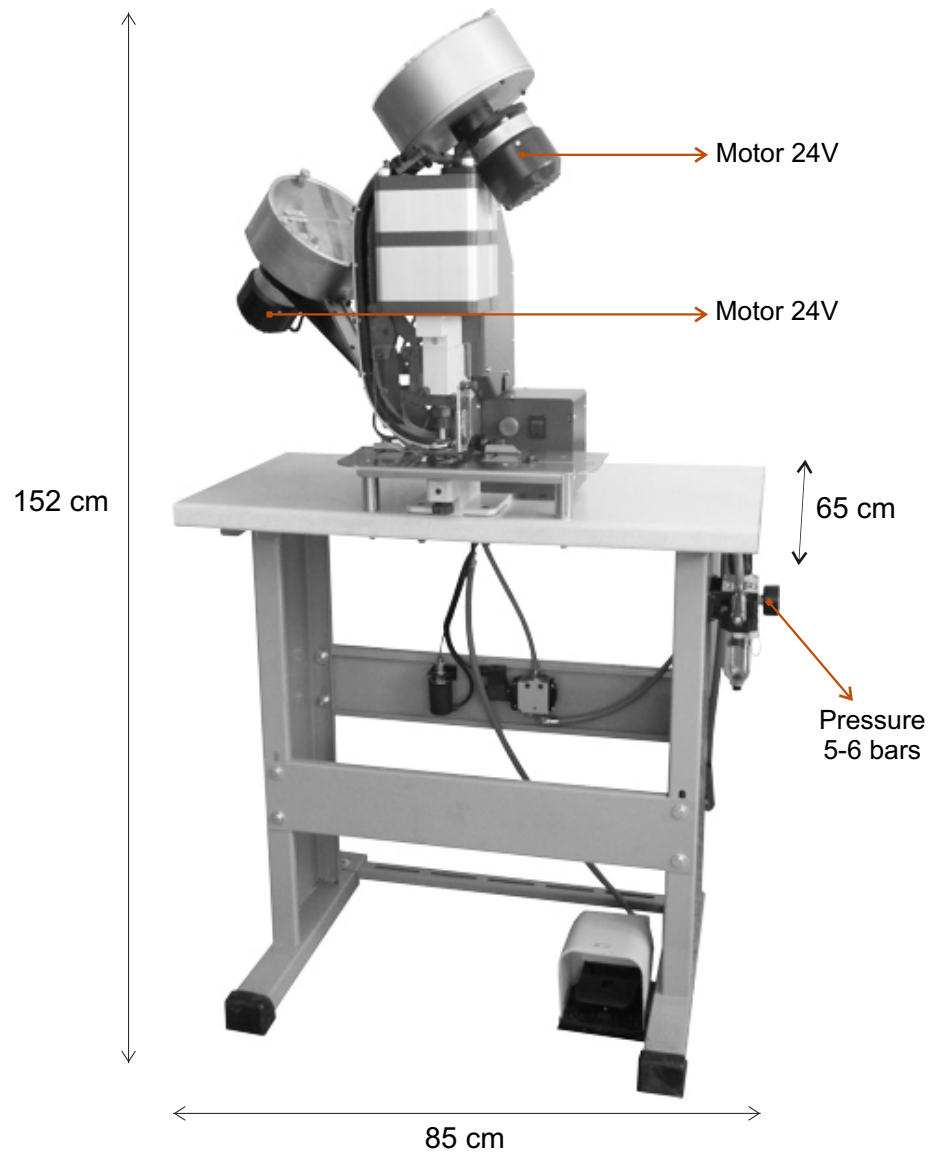


FIGURE 1



1.2. TECHNICAL DATA.**MEASUREMENTS.-**

DEPTH: 65 cm
WIDTH: 85 cm
HEIGHT: 152 cm
WEIGHT: 100 kg

THIS MACHINE IS TO CONNECTED TO 220V CURRENT.
BARS (PNEUMATIC DEVICES): 5-6 Bares

TWO 24V MOTORS FOR HOPPER BOXES.

CHAPTER II

INSTALLATION

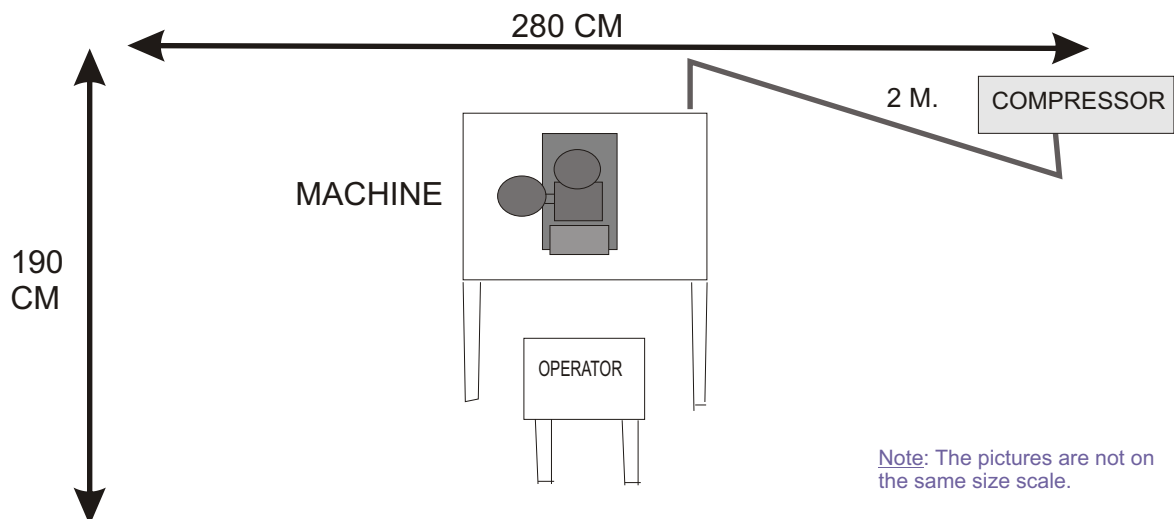
2.1. MINIMUM SPACE, ELECTRIC-PNEUMATIC INSTALLATION, POSITIONING THE MACHINE.

As we indicate in the lower figure, the operator can work in a seated position. The minimum space recommended is 280cm width 190cm depth.

The machine model J-269 needs the pneumatic compressor to provide it with 6 atmospheres of pressure.

THE MACHINE COMES WITH A 2 METER LONG HOSE TO CONNECT TO THE COMPRESSOR.

WARNING: WE RECOMMEND NOT TO HAVE THE PNEUMATIC WIRE TOTALLY STRETCHED.



2.2. MACHINE HANDLING.

The transportation of this machine requires a series of operations. Some of these operations may imply dangerous situations so please follow the following advise:

- Never stand beneath the cargo.
- Always lift the cargo gently.
- Avoid balancing the cargo.
- No brisk movements.
- Do not place yourself in the cargo moving trajectory.
- Use the correct equipment to move cargos.
- Check this equipment periodically.

The machine will carry packaging which is sufficient to avoid knocking or scraping any of its components. We advise that wooden packaging, in box or cage form, should always be used, always with adequate protection and the machine properly secured. The machines should always travel in the vertical position and never be overturned.

REMEMBER

THE MACHINE MUST NOT BE OVERTURNED.

2.3. UNLOADING AND LEVELLING.

The machine should be unloaded by means of a crane, using ropes at both sides of the box. If the machine comes in a box or cage, it can be unloaded using a fork lift.

When the machine is on the floor, totally unpacked, it is to be transported by means of a pallet jack to its permanent location.

The machine comes out of the factory totally leveled, and does not need to be secured to the floor.

It incorporates rubber leg tips for it not to move with vibration during use.

The floor underneath should be firm and strong.

2.4. LOCAL CONDITIONS.

In order to create optimum working conditions, the machine should be situated beneath a light source of 300 lux minimum

2.5. LEARNING INSTRUCTIONS.

[BEFORE STARTING THE MACHINE, READ THESE WARNINGS CAREFULLY.](#)

The following are a series of instructions and warnings which must be taken into account with regard to the model J-269.

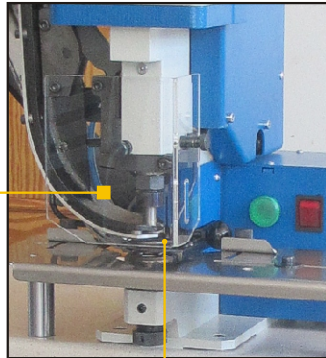
- Before connecting the machine to the electrical outlet or the compressor, it should be placed in its permanent location. Do not connect any electrical devices to the machine before it has been placed in its permanent location.

- Cleaning, manipulation and replacement of parts of the machine must always be carried out with the machine disconnected from the mains power supply.

- Do not remove from the machine any parts which protect the user from possible accidents, or adhesive labels or signs indicating electrical or hazardous components.

BEFORE STARTING THE MACHINE READ THESE WARNINGS CAREFULLY.

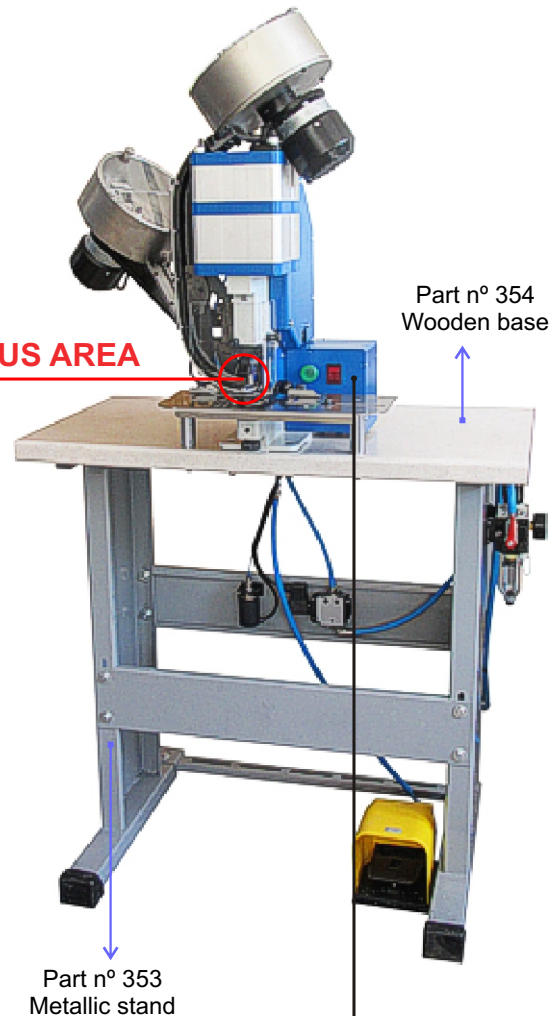
Grommeting area



Part n° 167 Acrylic shield

Part n° 165 Safety ring

dangerous area



Part n° 354 Wooden base

Part n° 353 Metallic stand

The most dangerous zone in the J-269, is the denominated "grommeting area".

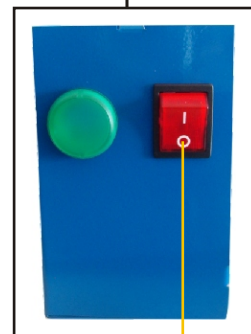
Never manipulate in this zone without unplugging the machine from the electrical-pneumatic source.

This zone is protected with an acrylic lid and a protection ring that prevent the fingers from getting in this area.



The **control panel** is the piece where the switches and indication leads are located. The control panel is never to be manipulated or opened. In case of breakdown contact JOPEVI S.L.

Control panel



Part n° 85 Red main switch

CHAPTER III

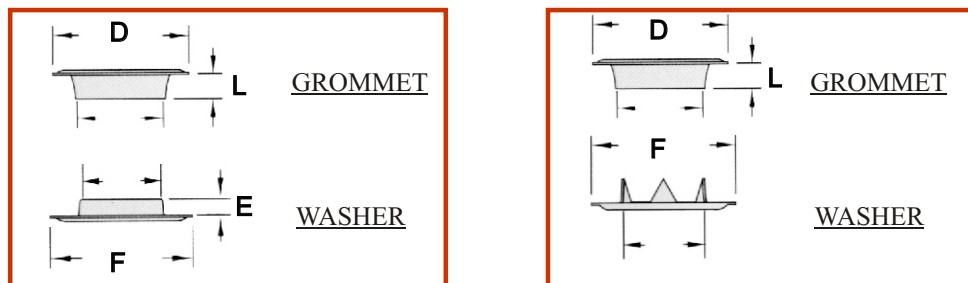
MACHINE USES

3.1. MACHINE DESCRIPTION.

The J-269 model is an automatic pneumatic machine designed to set grommets with washers, grommets without washers or to make holes in the material.

Each machine is manufactured for a specific size of grommet and washer. Grommet models may differ in: the head size "D", the length "L", the interior diameter of tube "d", the thickness, etc; and the washer models may differ in: the exterior diameter "F", the length "E", the interior diameter of washer hole "i", the washer shape, etc.

JOPEVI, S.L. RECOMMENDS YOU TO USE ALWAYS THE SAME TYPE OF GROMMET AND WASHER FOR WHICH THE MACHINE WAS DESIGNED. In order for the machine to set different grommet and washer models, certain parts need to be changed (the raceway and the top and bottom sets); but you always have to use the same washer the machine was manufactured for.



In order for the machine to set different grommet models, certain parts need to be changed. SEE CHAPTER IV ADJUSTMENTS.

JOPEVI, S.L. will accept no responsibility arising from the use of this machine in any way different from that which is described in this instruction manual.

3.2. SETTING UP THE MACHINE FOR ITS OPERATION.

PLEASE VERIFY THESE ADJUSTMENTS BEFORE CONNECTING THE MACHINE.

Before starting the machine for the first time, and each time the location of the machine is changed, or any changes are made in parts or any adjustments are done to it, we recommend the following steps:

After placing and making the machine level in its permanent location "**STILL WITHOUT PLUGGING IT IN**", lubricate it with SAE 40 type oil in the grease cups and red marks. Let the oil have enough time to cover the parts and then clean the excess oil that might remain or drip.

To verify the machine is not blocked or might have suffered a blow or breakage.

CHAPTER IV

ADJUSTMENTS

UNPLUG THE MACHINE BEFORE CHANGING THE GROMMET OR THE WASHER MODEL WHILE ADJUSTING THE TIGHTNESS OF THE SETTING OF THE GROMMET AND WASHER, INSTALLING OPTIONAL ACCESORIES, OR CARRYING OUT ANY OTHER KIND OF MANIPULATION.

The machine J-269 model sets metal grommets and washers automatically.

JOPEVI, S.L recommends to use always the same kind of grommets and washers which the machine was prepared for. For placing other grommet and washer models, it will be necessary to contact JOPEVI, S.L and they will study this possibility. If there is a way to solve this problem, your machine should be sent over to our factory for some modifications.

The machine J-269 model sets grommets on different kinds of material and on different thicknesses. For a perfect grommeting action, the pressure that the top and bottom dies put on the grommets can be adjusted. Each time you change the dies or you use a different material for setting a grommet, it will be necessary to adjust the machine for a proper grommeting.

Machine model J-269 has two vertical axes:

- N° 511 "Driving stem", that governs the cutting pressure, and
- N° 507 "Plunger", that governs the pressure of the grommeting by impacting on the bottom die which causes the grommet to be more or less secured on the material.

Changing the whole set of dies, always with the machine unplugged.

- Pull upwards the ring compensator n° 233C by moving the compensator base latch n° 196 that holds it.
- Unscrew the top die n° 217, remove the top set spindle n° 218 and the top set spindle spring n° 229 which are inside the top die.
- Unscrew the bottom die n° 219.
- Replace the new set of dies in the opposite order they were removed.
- Replace the ring compensator n° 233C around the bottom die n° 219 and secure it through part n° 196.

CAUTION: For adjusting the machine pressure, it will be necessary at some time to connect the air hose to the compressor. You have to be very careful while making these adjustments, always making sure that your hands are out of the grommeting area and that nobody can press the pedal so you could have your hands caught in the machine.

In the same way the operator will have to be very careful while pressing the pedal in order to make these adjustments, making sure that the machine cannot catch our hands or fingers.

Adjusting the cutting pressure (for making holes in the material). For this purpose you have to raise or lower the bottom die n° 219 in such a way that when the machine is put in operation and you press the pedal, the top set spindle n° 218 barely touches the bottom die n° 219. Too much contact between the top set spindle and the bottom die would cause them to break down.

With the machine unplugged

- Loosen the screw that holds the bottom die n° 220.
- You have to keep in mind that the top set spindle n° 218 always comes down to the same position and can hit the upper part of the bottom die n° 219. Put a punch into the side hole of the bottom die n° 219, turn the die to the right or left until you get an optimal position.

A very simple way of checking the cutting pressure is to put a little punch into the hole of the bottom set holder n° 220, turn the bottom set holder n° 220 (clockwise) in such a way that the bottom die n° 219 comes down a little, place a piece of paper (**always keeping your hands and fingers out of the grommeting área**) between the bottom die n° 219 and the top set spindle n° 218, then (**with the machine connected to the compressor**) press the pneumatic pedal while using the punch to rotate the bottom set holder n° 220 until the bottom die n° 219 makes a hole in the piece of paper.

- Disconnect the machine from the compressor,
- Tighten the screw that holds the bottom set holder n° 220.

Adjusting the pressure of the grommeting. For this purpose you will have to raise or lower the top die n° 217, which is the one that does the grommeting.

With the machine unplugged

- Unscrew nut n° 503 a little bit (unclockwise),
- Put a punch into the side hole of the die n° 217, turn the die to the right or left until it reaches an optimal position. The higher the top die n° 217 is the lesser the pressure of the grommeting.

In order to obtain the proper pressure (**with the machine connected to the compressor and with your hands and fingers out of the grommeting área**), you have to press the pedal while making the pressure adjustments by putting a punch into the side hole of the top die n° 217 so you can turn the top die n° 217 to the right or left, until the distance between the bottom die n° 219 and the top die n° 217 equals approximately the thickness of the material used for setting the grommets.

- Disconnect the machine from the compressor,
- Tighten screw n° 503 (clockwise).

CHAPTER V MAINTENANCE

5.1. MECHANICAL PART OF THE MACHINE.

For an optimal operation of the machine, it is recommended that you keep some parts clean and always lubricated. The cleaning should ALWAYS be done with the machine disconnected from the electrical power source and the compressor.

The pedal we press to operate the machine, should always be clean and clear of any debris that could prevent its normal operation.

The exterior of the machine should be cleaned with a rag that will not leave threads, so that the threads can not be stuck to the machine.

The head of the machine has exterior grease cups. You must use a manual pressure oil can to inject oil (the oil type to be used should be "SAE 40") into the grease cups two or three times a week. We recommend to do this at the end of the journey, and clean up the possible excess oil next day.

During the first month of operation it must be done twice per week. After the first month it only needs to be done once a week.

If the machine is going to go for a long period of time without use, it will be necessary to do a general cleaning, and greasing in the indicated spots, disconnecting it from the compressor or from the power source (if it has any electrical devices), and then cover it so that it is protected from the dust and/or humidity.

5.2. PNEUMATIC PART OF THE MACHINE.

The air filter is automatic and does not require any maintenance. Should the air filter become humid, please empty it by pressing the bottom switch.

5.3. ELECTRICAL PART OF THE MACHINE.

The electrical part of the machine is clearly marked with a yellow triangle and does not need any type of maintenance. Do not open unless directed to do so by JOPEVI.

The electrical parts of the machine: motors, cables, etc, come completely sealed and secured through nuts. The electrical parts need no maintenance, do not open or manipulate them.

The detectors should be kept clean, and to achieve this, they should be wiped with a dry cloth.

If an optional laser light n° 155 has been installed, it needs no cleaning or maintenance, **and remember that you must never shine it directly in anybody's eyes, since it could be harmful.**

The two hopper box motors are totally sealed and do not require any maintenance.

Detector



Part n° 155 Laser light
(optional)



ELECTRICAL PART



Note: The pictures are not on the same size scale.

VERY IMPORTANT

Machine disconnected from the electrical and pneumatic source.

CHAPTER VI

TROUBLE SHOOTING

<u>PROBLEM</u>	<u>CAUSE</u>	<u>SOLUTION</u>
THE MACHINE DOES NOT WORK WHEN PRESSING THE PEDAL.	Check that the machine is correctly connected to 220V current.	Connect.
	Check that the machine is connected to the compressor with a pressure of 6 atmospheres.	
DEFECTIVE GROMMETING.	The bottom die n° 219 is worn out or broken.	Replace the bottom die n° 219 with a new one. See Chapter IV. Adjustments.
	The grommet and the washer are not properly fixed on the material (loose grommet and washer). Adjustment of the tightness of the setting.	See chapter IV. Adjustments. Adjusting the tightness of setting, changing dies.
FAILURE TO PICK UP GROMMETS.	The spindle n° 218 does not pick up the grommet from the raceway.	Part n° 268 and the finger spring n° 132 are broken or worn out, replace them with new ones.
THE MACHINE CRUSHES THE HEAD OF THE GROMMETS.	The top die n° 217 or the grommet spindle n° 218 does not correspond to that grommet model.	Replace it with a new one, and adjust the machine pressure. See Chapter IV. Adjustments.
IT WILL NOT CUT OR LEAVE MATERIAL RESIDUALS.	Part n° 218 top set spindle or part n° 219 bottom die, is worn out or broken.	Replace it with a new one. See chapter IV. Adjustments.
	The cutting pressure is low.	Check the cutting pressure. See chapter IV. Adjustments. Make sure that the machine works with a pressure of 6 atmospheres.
FAILURE TO PLACE THE WASHERS.	Check that the part for placing washers n° 532 is not jammed.	
	Through knob n° 528 you can place the washer in case the part n° 532 should get jammed.	

Difficulties may generally arise from the incorrect use of the machine by personnel not properly trained, who are liable to alter upset essential mechanisms.

FOR ANY MATTER NOT COVERED IN THIS MANUAL, CALL THE NEAREST DISTRIBUTOR, OR CONTACT US DIRECTLY.

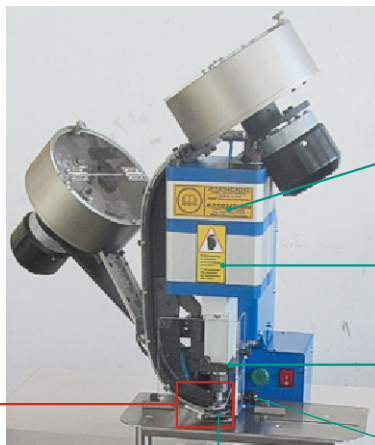
CHAPTER VII

SAFETY INSTRUCTIONS

As we have indicated in the manual, the J-269 machine has a series of protection devices to prevent the operator from getting his fingers caught or any other kind of accident. PLEASE DO NOT REMOVE THESE PROTECTION DEVICES.

The most dangerous area in the J-269 is the grommeting area "C" where the operator may get his fingers or his hands caught. In order to prevent this, some protection devices have been installed:

FIGURE 4



Part nº 165
Ring guard

Part nº 167
Acrylic shield

D
Part nº 528 Knob

FIGURE 5



Note: The pictures are not on the same size scale.

FIGURE 6



FIGURE 7



Part nº 165
Ring guard

In figure 4 "C" we indicate the area we consider dangerous for the operator.

This area "C" is protected by:

- *A part nº 167 transparent acrylic shield that allows vision but does not permit the worker to introduce his hands, indicated in figure 4.*
- *A ring guard part nº 165 indicated in figure 7, that prevents the worker from accidentally introducing fingers or hands in the grommeting area.*

Just in case the washer should not be placed properly on the bottom die, the knob "D" part nº 528 could be used for that purpose, so you would not have to introduce your hands in the grommeting area for placing the washer properly. These protection devices are tightly held through screws, that prevent them from becoming detached.

All areas considered dangerous are marked and securely enclosed.

The sticker shown in figure 5 warns you that the grommeting area "C" is a dangerous area, and the machine must always be unplugged before making any adjustments in that area.

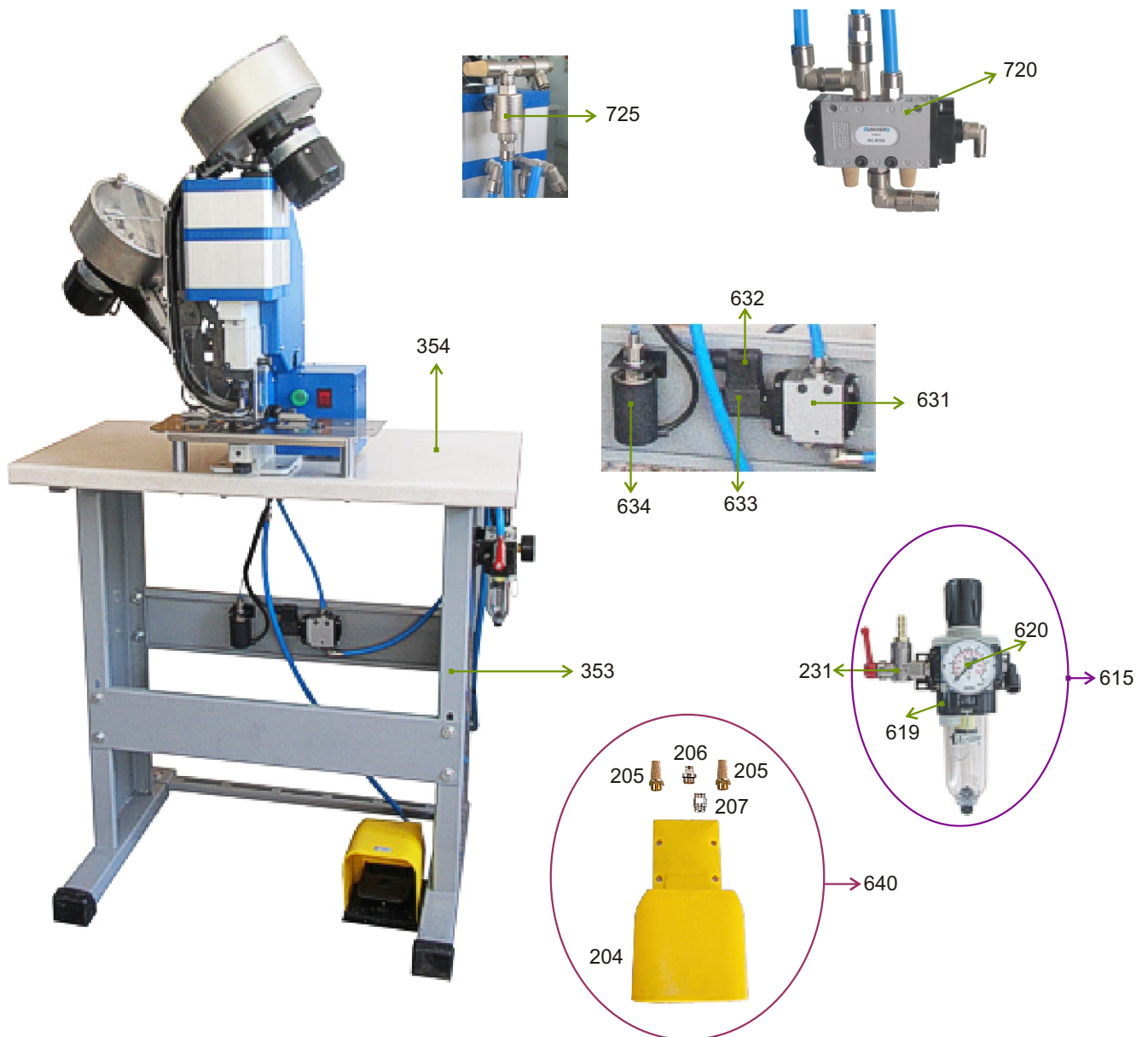
All mechanical, electric and pneumatic parts are securely enclosed and tightly screwed up.

When the machine includes an optional device such as a laser pointer part nº 155C, you must not shine this pointer directly in anyone's eyes since it could be harmful, and keep it away from children.

We strongly warn you that for any adjustment or any other manipulation that needs to be done, the machine must be disconnected from the electrical power source and the compressor air inlet.

For any problem that may arise and can not be solved, please call the nearest distributor or get in contact directly with JOPEVI, S.L.

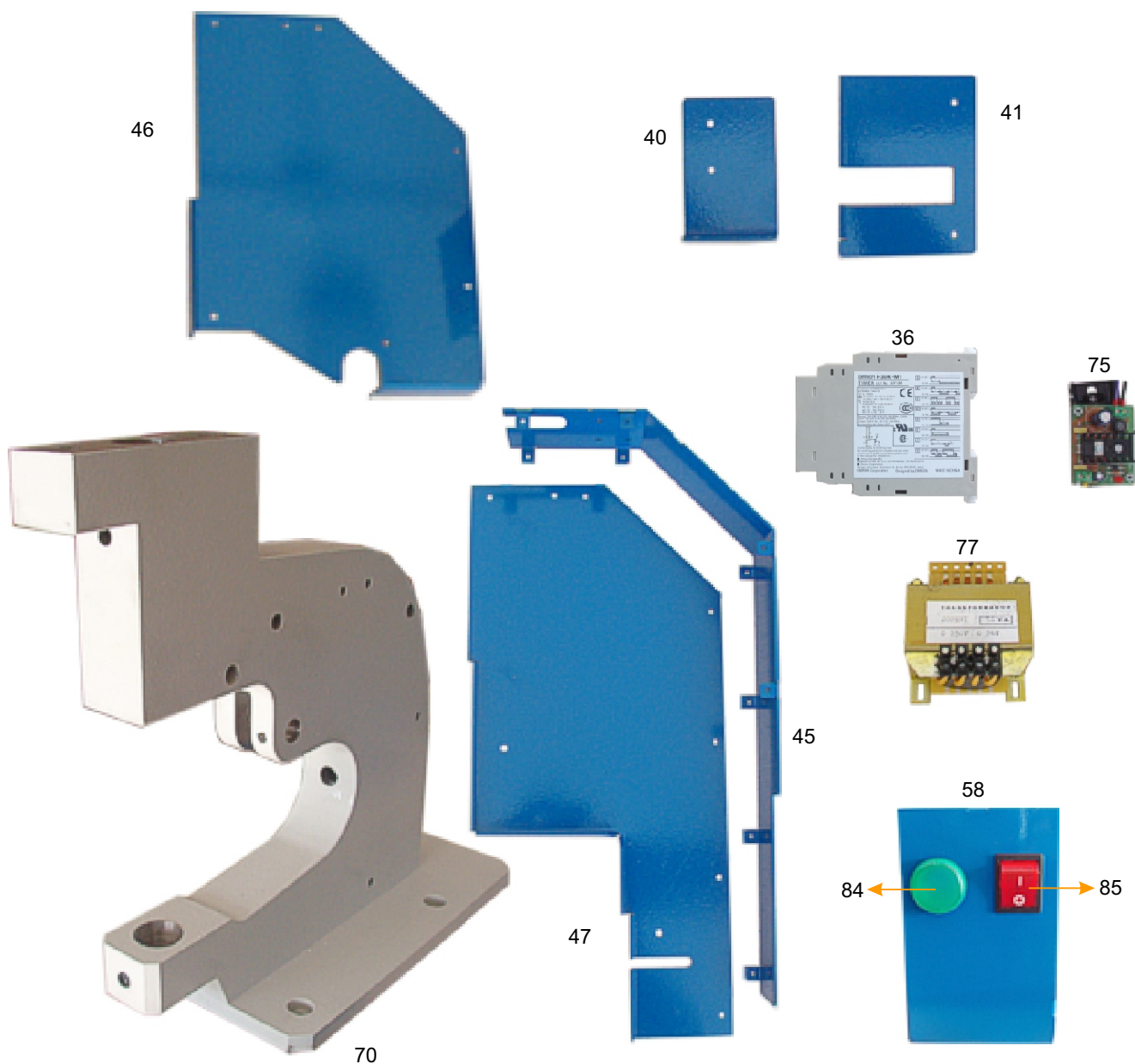
Note: The pictures are not on the same size scale.



Part n° 204 Pneumatic pedal
 Part n° 205 Noiseless parts
 Part n° 206 Connector 1/4 tube 4
 Part n° 207 Connector 1/4 tube 8
 Part n° 231 Opening key
 Part n° 353 Metallic stand
 Part n° 354 Wooden board
 Part n° 615 Complete regulation filter
 Part n° 619 Air filter
 Part n° 620 Manometer
 Part n° 631 Electrovalve
 Part n° 632 Coil connector
 Part n° 633 Coil
 Part n° 634 Pressure regulator

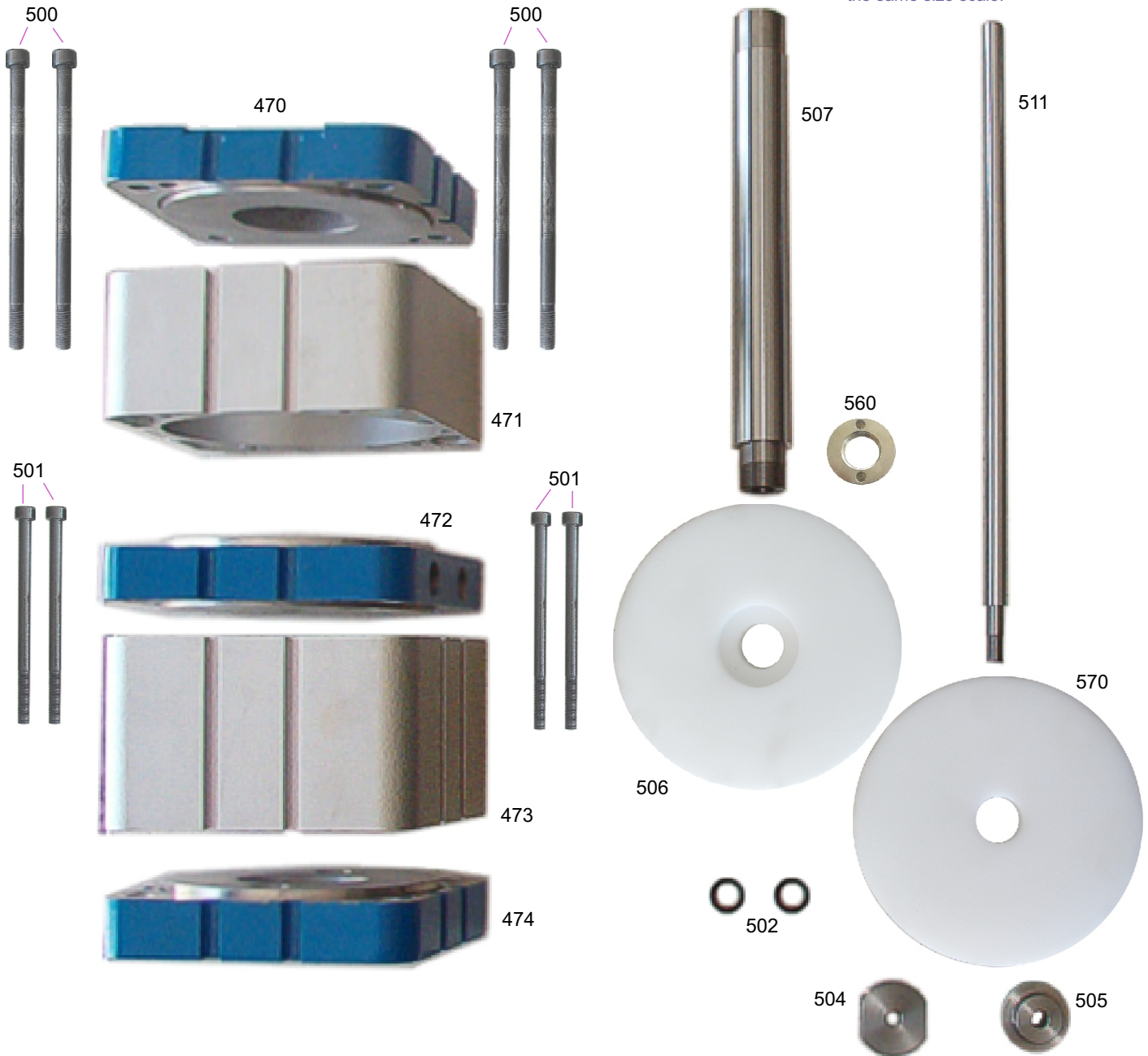
Part n° 640 Complete pedal
 Part n° 720 Valve
 Part n° 725 Quick pressure valve

Note: The pictures are not on the same size scale.



- Part n° 36 Motor timer
- Part n° 40 Cover
- Part n° 41 Cover
- Part n° 45 Back cover
- Part n° 46 Right hand cover
- Part n° 47 Left hand cover
- Part n° 58 Switch cover
- Part n° 70 Housing
- Part n° 75 Power source
- Part n° 77 Transformer
- Part n° 84 Green switch
- Part n° 85 Red switch

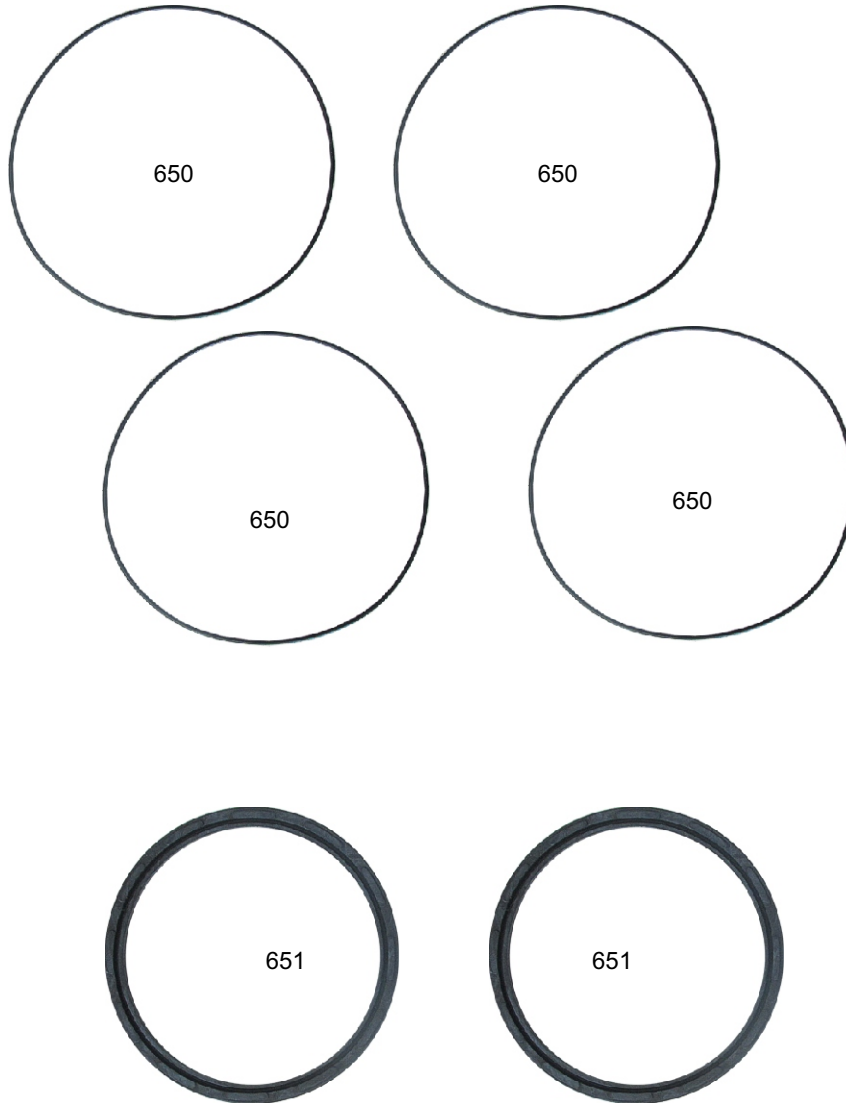
Note: The pictures are not on the same size scale.



Part n° 470 Upper part of cylinder
 Part n° 471 Upper cylinder
 Part n° 472 Central part of cylinder
 Part n° 473 Lower cylinder
 Part n° 474 Lower part of cylinder
 Part n° 500 Screws (4)
 Part n° 501 Screws (4)
 Part n° 502 Washers (2)
 Part n° 504 Nut for driving stem n° 511
 Part n° 505 Piston case n° 506
 Part n° 506 Plunger case

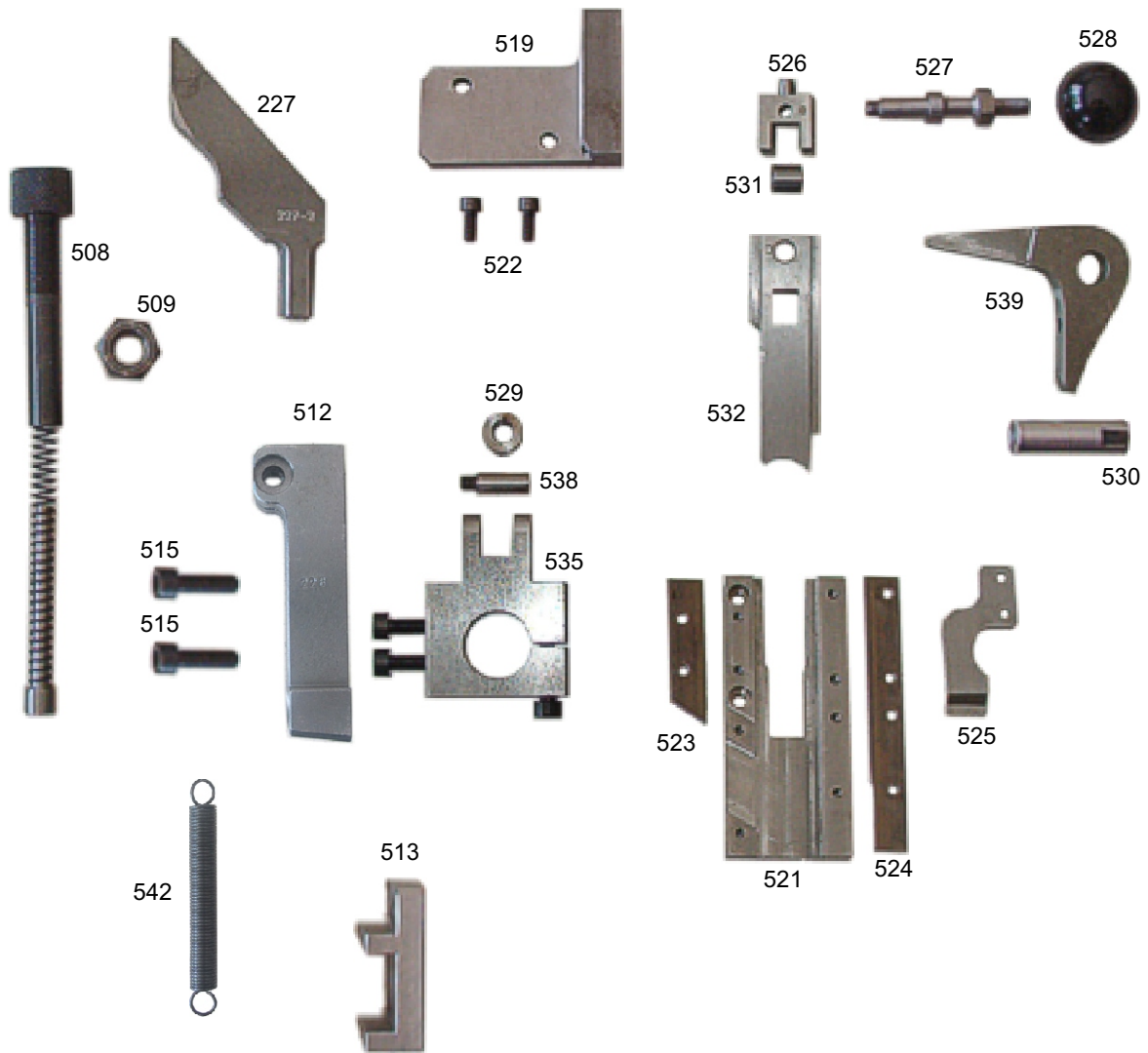
Part n° 507 Plunger
 Part n° 511 Driving stem
 Part n° 560 Nut for plunger
 Part n° 570 Driving stem piston

Note: The pictures are not on the same size scale.



Part n° 650 O-ring rubber 125 x 1'80 (4)
Part n° 651 O-ring rubber 125 x 110 x 5 (2)

Note: The pictures are not on the same size scale.



Part n° 227 Part for separating grommet raceway
 Part n° 508 Part for knob n° 508
 Part n° 509 Nut
 Part n° 512 Part for regulating raceway exit
 Part n° 513 Guide for part that regulates raceway exit n° 512
 Part n° 515 Screws (2)
 Part n° 519 Bracket for part n° 521
 Part n° 521 Slide
 Part n° 522 Screws (2)
 Part n° 523 Short guide
 Part n° 524 Long guide
 Part n° 525 Part for holding washer

Part n° 526 Fork
 Part n° 527 Screw for knob
 Part n° 528 Knob
 Part n° 529 Roller for flange n° 535
 Part n° 530 Pin
 Part n° 531 Roller
 Part n° 532 Part for placing washers
 Part n° 535 Flange
 Part n° 538 Pin for flange
 Part n° 539 Rocker arm (part for placing washers n° 532)
 Part n° 542 Spring

Note: The pictures are not on the same size scale.

GROMMET HOPPER BOX

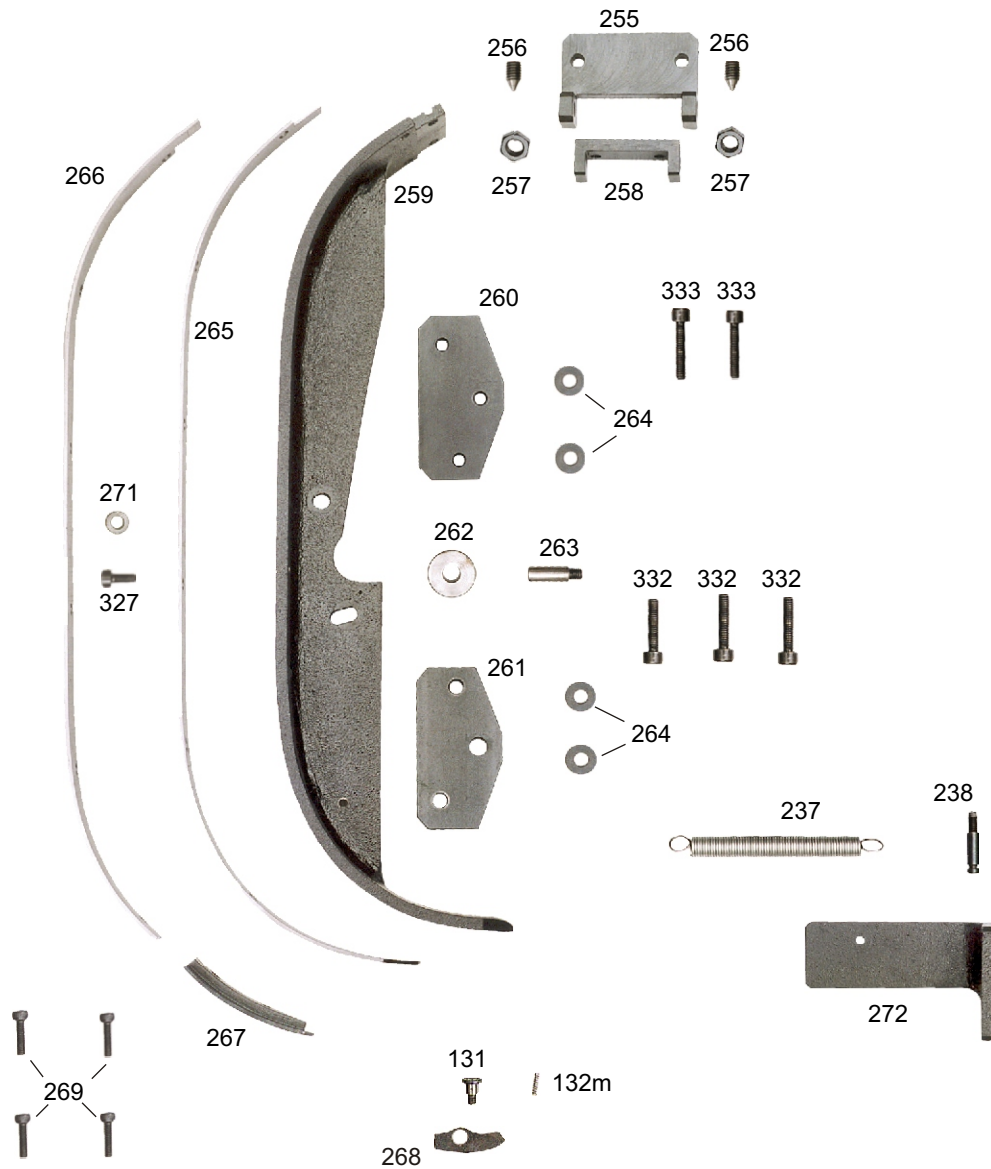


Part n° 181 Screw for holding part n° 246
 Part n° 239 Hopper box motor
 Part n° 241 Grommet hopper box bottom plate
 Part n° 242 Hopper box housing
 Part n° 243 Brush pin
 Part n° 244 Threaded pin of 6 for holding hopper box (4)
 Part n° 245 Brush disc
 Part n° 246 Brush spacer
 Part n° 247 Acrylic box cover
 Part n° 251 Knob for opening the hopper box cover
 Part n° 253 Bearing (2)
 Part n° 270 Screw of 6 (2)
 Part n° 291 Knob washer

Part n° 341 Acrylic box hinge n° 247 (4)
 Part n° 385 Magnet for holding the box cover knob
 Part n° 510 Grommet hopper box mounting bracket

Note: The pictures are not on the same size scale.

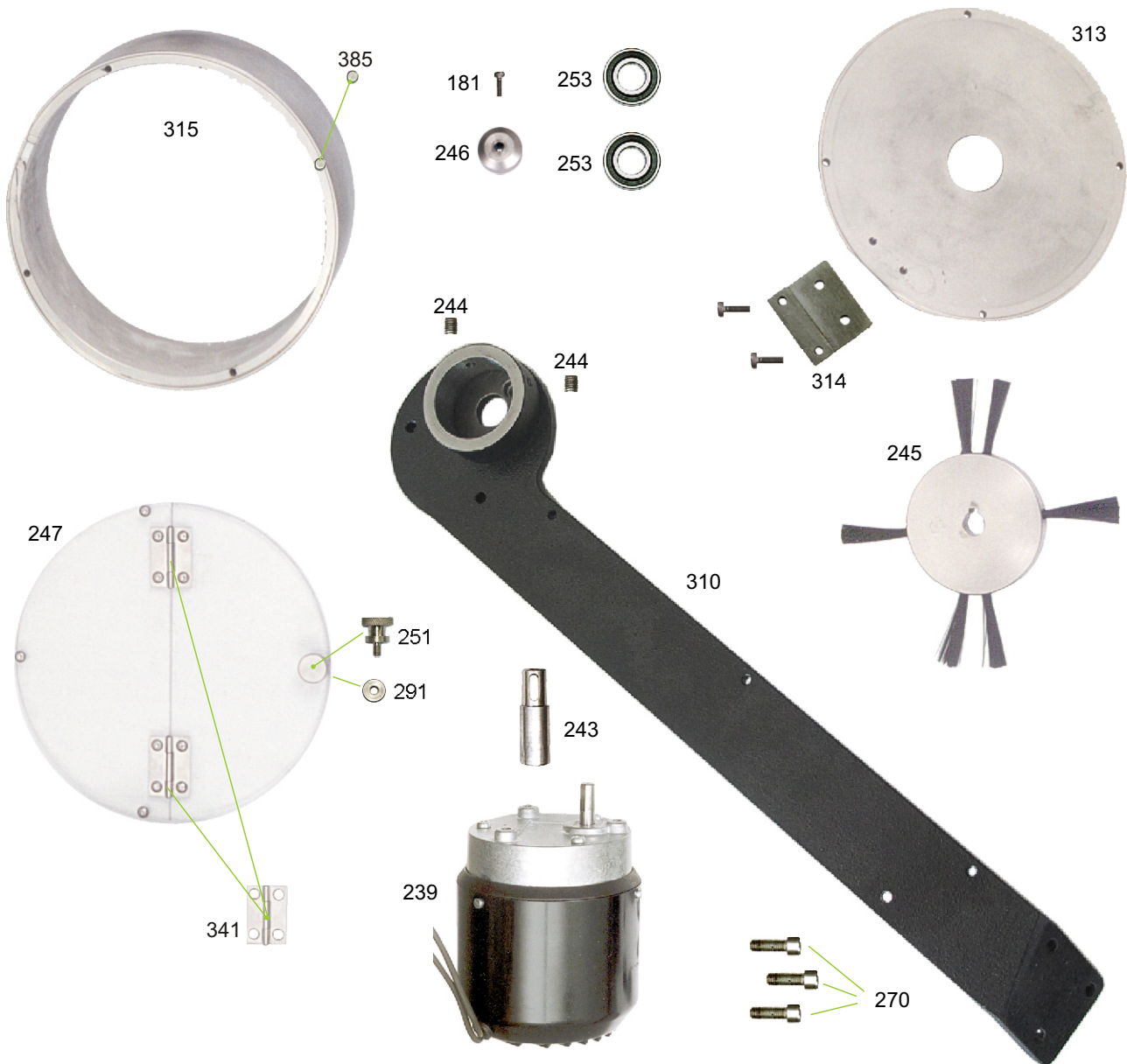
GROMMET RACEWAY



<p>Part n° 131 Finger screw Part n° 132m Spring for part n° 268 Part n° 237 Stripper plate spring Part n° 238 Raceway spring nut Part n° 255 Front hopper box lower bracket Part n° 256 Mounting stud (2) Part n° 257 Nut (2) Part n° 258 Part for hinge Part n° 259 Raceway support Part n° 260 Outer raceway bracket Part n° 261 Inner raceway bracket Part n° 262 Raceway bracket spacer Part n° 263 Spacer stud Part n° 264 Mounting spacers (4)</p>	<p>Part n° 265 Long guide Part n° 266 Short guide Part n° 267 Fixed guide Part n° 268 Finger Part n° 269 Screw (4) Part n° 271 Raceway strip spacer Part n° 272 Front raceway bracket Part n° 327 Grommet raceway screw Part n° 332 Mounting screw of 6 (3) Part n° 333 Mounting screw of 5 (2)</p>
---	--

Note: The pictures are not on the same size scale.

WASHER HOPPER BOX

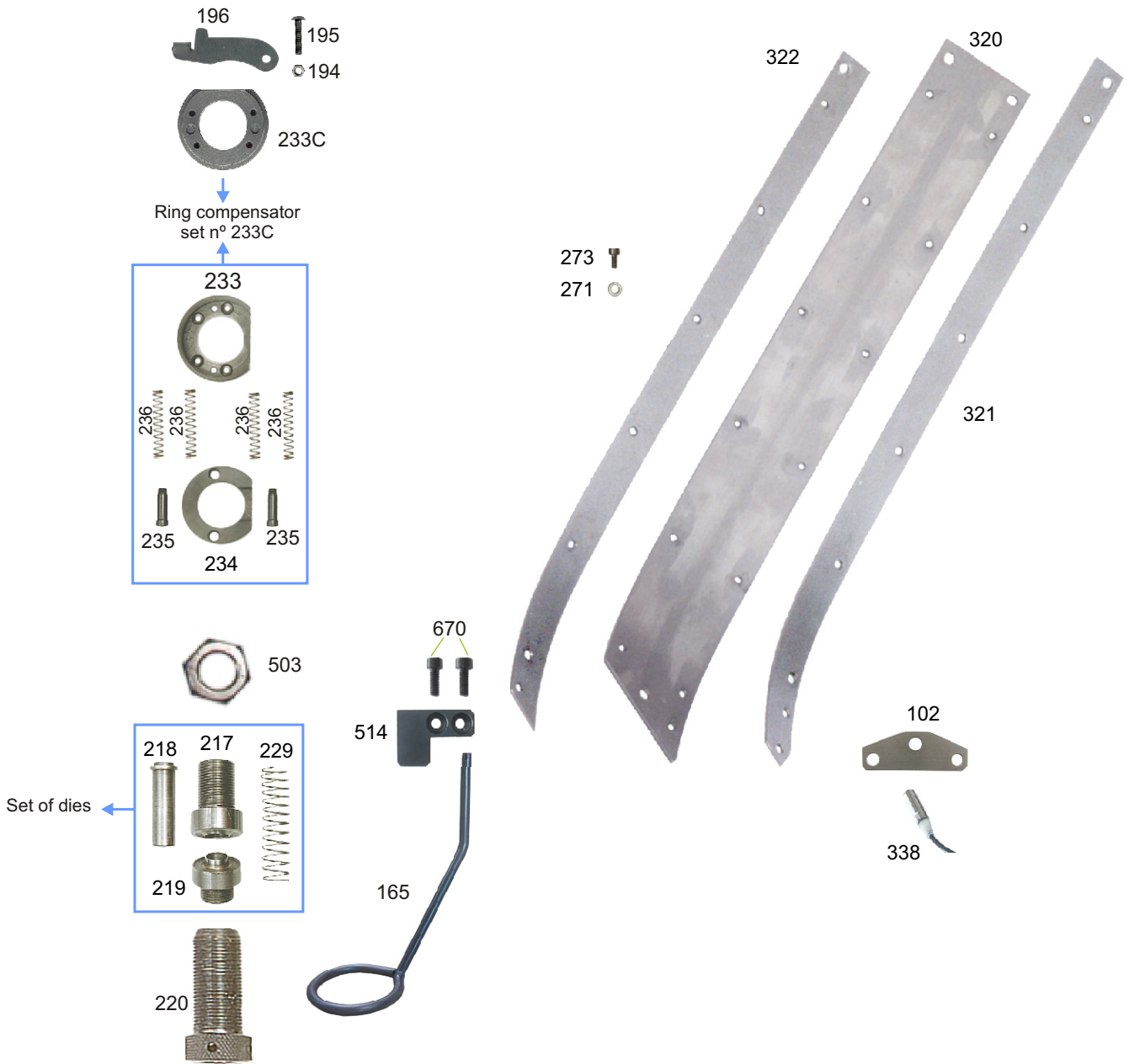


Part n° 181 Screw for holding part n° 246
 Part n° 239 Hopper box motor
 Part n° 243 Brush pin
 Part n° 244 Threaded pin of 6 for holding hopper box (4)
 Part n° 245 Brush disc
 Part n° 246 Part for fixing disc
 Part n° 247 Acrylic box cover
 Part n° 251 Knob for opening the hopper box cover
 Part n° 253 Bearing (2)
 Part n° 270 Screw of 6 (3)
 Part n° 291 Knob washer

Part n° 310 Support for washer raceway
 Part n° 313 Washer hopper box bottom plate
 Part n° 314 Part for fixing guides
 Part n° 315 Washers hopper box
 Part n° 341 Hinge for acrylic cover n° 247 (4)
 Part n° 385 Magnet for holding the hopper box cover knob

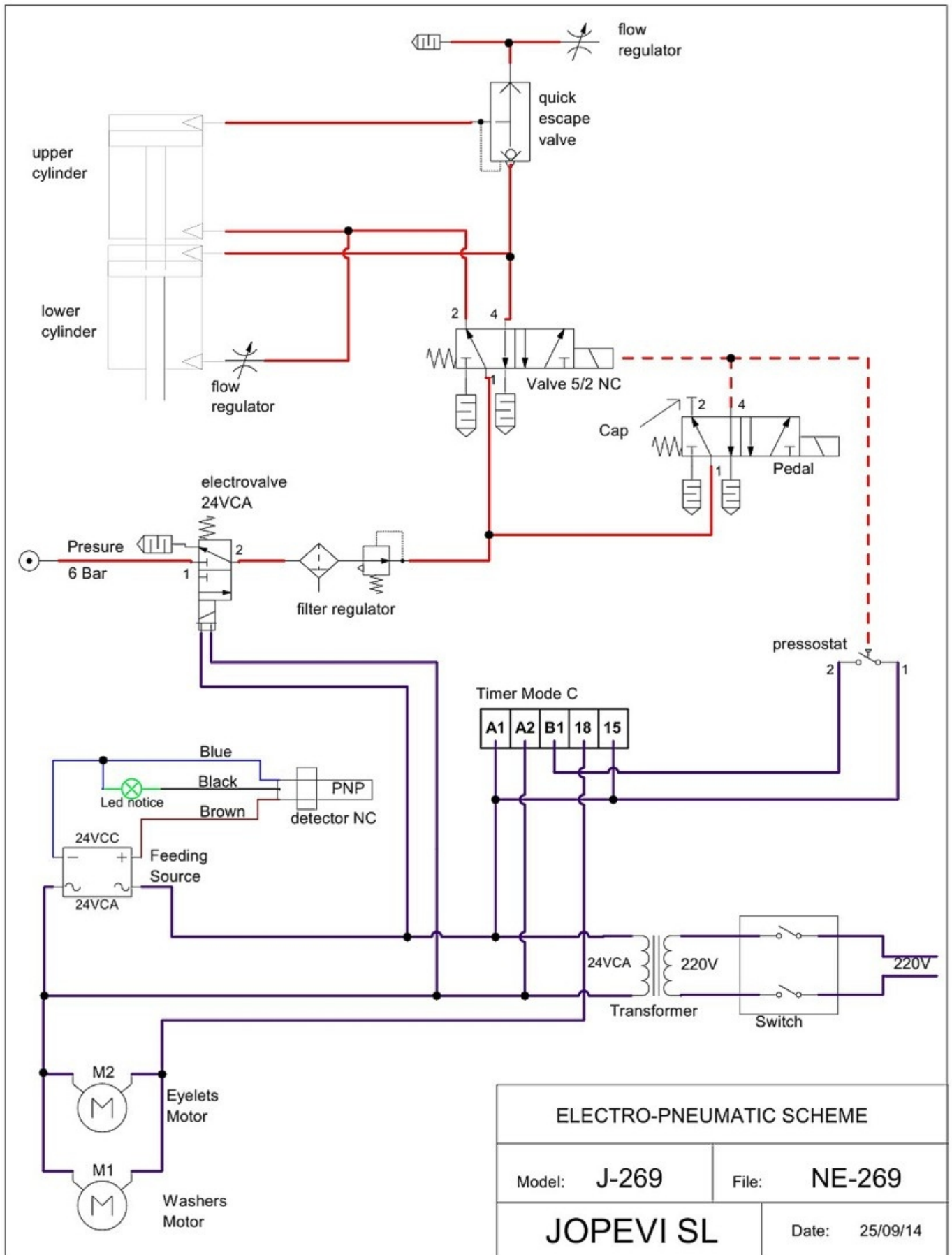
Note: The pictures are not on the same size scale.

GUIDES FOR WASHER RACEWAY



Part n° 102 Washer detector bracket n° 338	Part n° 271 Raceway strip spacers
Part n° 165 Safety ring	Part n° 273 Raceway screws
Part n° 194 Nut for screw n° 195	Part n° 320 Washer raceway strip
Part n° 195 Screw of 4 for part n° 196	Part n° 321 Right raceway strip
Part n° 196 Compensator base latch	Part n° 322 Left raceway strip
Part n° 217 Top die	Part n° 338 Metal washer detector
Part n° 218 Top set spindle	Part n° 503 Nut for plunger n° 511
Part n° 219 Bottom die	Part n° 514 Part for holding safety ring n° 165
Part n° 220 Bottom die holder	Part n° 670 Screw for holding part n° 514
Part n° 229 Top set spindle spring	
Part n° 233 Die base	
Part n° 233C Ring compensator set	
Part n° 234 Base washer (2)	
Part n° 236 Base spring (4)	

ELECTRICAL-PNEUMATIC INSTALLATION



ELECTRO-PNEUMATIC SCHEME

Model: J-269

File: NE-269

JOPEVI SL

Date: 25/09/14

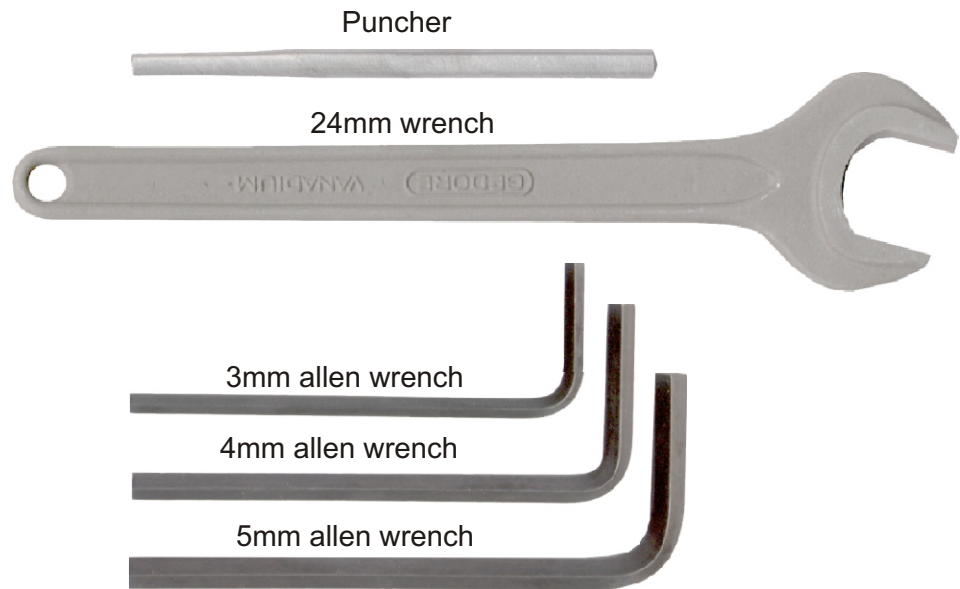
SUPPLIED TOOLS AND REPLACEMENT PARTS.

TOOLS.

Along with your machine, you will find all the necessary tools to do the required maintenance and adjustments as follows:

- 1 Puncher
- 1 24mm wrench
- 1 3mm allen wrench
- 1 4mm allen wrench
- 1 5mm allen wrench

Note: The pictures are not on the same size scale.



PARTS.

Included with the machine is a part n° 219 bottom die.

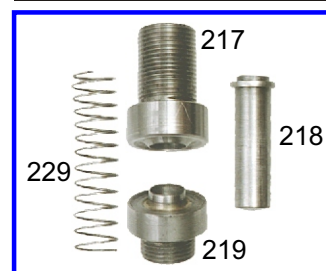
JOPEVI, S.L recommends to have a complete set of dies in stock parts n°: 217 - 218 - 219 and 229.

Part included



Part n° 219
Bottom die

Parts recommended



Complete set of dies

“EC” APPROVAL DECLARATION

MR. LUCIO JAEN ANDREU, MANAGER OF THE COMPANY JOPEVI S.L. MANUFACTURERS OF MACHINERY FOR THE FOOTWEAR SECTOR, WITH REGISTERED OFFICE AT C/.NICOLAS DE BUSSI N° 32, ELCHE PARQUE INDUSTRIAL, ELCHE (ALICANTE) ESPAÑA.

DECLARES:

- THAT WITH THE OBJECT OF THAT WHICH IS ESTABLISHED IN ARTICLE 8 OF THE COUNCIL DIRECTIVE OF 14 JUNE 1989 RELATING TO THE APPROXIMATION OF MEMBER STATES (89/392/CEE), THE MACHINE WITH THE FOLLOWING CHARACTERISTICS:

MODEL: J-269

SERIAL NUMBER:

YEAR OF MANUFACTURE:

- MEETS WITH THE ESSENTIAL HEALTH AND SAFETY REQUIREMENTS RELATING TO DESIGN, AS ESTABLISHED IN ANNEX I OF THE ABOVE MENTIONED DIRECTIVE.

- THAT THE MACHINE IS NOT INCLUDED AMONG THOSE LISTED IN ANNEX IV.

- THAT THE FOLLOWING UNIFIED NORMS HAVE BEEN RESPECTED IN FULL DURING DESIGN AND MANUFACTURE:

AND FOR ALL OPPORTUNE RECORDS EMITS THIS DECLARATION OF APPROVAL IN ELCHE, ON _____ OF _____, 20____.

SIGNED:

PAGE